

**Civil Service Examinations**

The United States civil service commission has announced open competitive examinations as follows:

Chief topographic draftsman, \$3600 a year; principal topographic draftsman, \$3300 a year; senior topographic draftsman, \$2000 a year; topographic draftsman, \$1800 a year; assistant topographic draftsman, \$1620 a year; various services.

Senior scientific aide (taxonomic entomology), \$2000 a year, Bureau of Entomology, Department of Agriculture.

All salaries given above are subject to a deduction of not to exceed 10 per cent until June 30, 1934, and of not to exceed 5 per cent during the fiscal year ending June 30, 1935, as a measure of economy, and also to a deduction of 3 1/2 per cent toward a retirement annuity.

Full information may be obtained from the Secretary of the United States Civil Service Board of Examiners, at the post office or customhouse in this city.

**L.K. FIRESTONE ANNOUNCES NEW TIRE**



High Speed Tire for 1934 is L. K. Firestone, salesman of the Firestone Tire and Rubber Company of California.

In a statement to Firestone Dealers and the Motoring Public, Leonard Firestone today announced the new Firestone Tire for 1934 and told of the greatest improvements ever made in balloon type tires.

The young executive brimming with enthusiasm and confidence told how Firestone engineers, always a step ahead of the industry had developed the first successful balloon tire in 1923, and have initiated every worthwhile development and improvement in tires since then.

"It is only natural after considering that Firestone brought out the first all-rubber non-skid tire and the above facts that we should lead in the further development of tire construction to meet the demands of the high-powered, high speed cars of today. Firestone engineers and chemists brought out startling developments to assure motorists of safety, longer, and more economical tire performance. The result is a new 1934 Firestone High Speed Tire with a wider, flatter tread, greater thickness, deeper non-skid, more and tougher rubber and non-skid contact with the road."

"These improvements result in more than 50% added non-skid mileage in these new tires," Mr. Firestone declared. "This added safety and protection against blowouts, and greater economy than ever before is made possible by the Firestone patented and exclusive process of Gum-Dipping, whereby the millions of cotton fibers inside the high stretch cords are soaked and coated with pure live rubber which provides greater strength and greater adhesion between the tread and body of the tires."

For 14 consecutive years, leading race drivers have driven to victory on Firestone Tires built with Gum-Dipped High Stretch Cords. The tires are given the severest test known each May 30th when they are driven at terrific speeds over the hot bricks in the 500 mile Indianapolis Speed Classic. They are also road tested on the large fleet of Firestone Test Cars, day and night, every day of the year, over all kinds of roads and highways. The new Firestone Tire is recognized by car owners as the Masterpiece of Tire Construction.

Firestone Dealers everywhere have the new 1934 tires in their stores and are ready to show the added advantages and construction features of the Firestone High Speed Tire.



**GET THE HABIT**  
OF READING THE CLASSIFIED ADS EACH WEEK

You'll be surprised at the "Buys" you can make. For SURE-FIRE RESULTS Use Them Yourself

**Phone 444**  
For An Experienced Ad Writer

**'Nerve Center' of United Press News**



An endless flow of news passes through the San Francisco bureau of United Press, with leased wires operating 24 hours per day to bring information on personalities, events and major happenings throughout the world to every client newspaper. Approximately 90,000 words per day pass through the bureau, the main room of which is shown above. Below, left, is "Unipress" Ronald Wagner at one of the many telephones in the bureau, busy receiving details of a news story. Below, center, is a teletype over which news is received. It is only a matter of minutes until news flashed over facilities of the United Press is sent to linotype operators, such as the one shown lower right above, and the news is placed before the newspaper reader.

**Compromise Out of Court Nets Widow Big Sum**

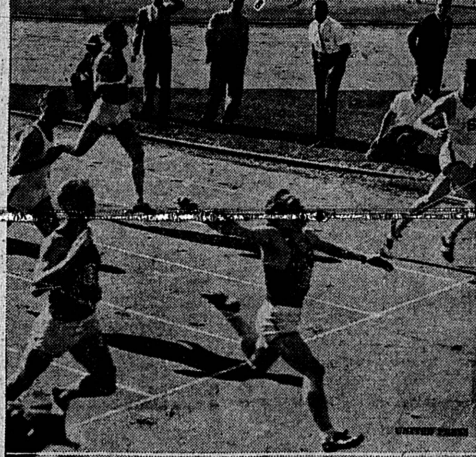
Court Order Calls for Payment of \$15,000 for Death of Husband

Mrs. Ruth Baldrick, widow of the late Fire Chief Thomas Baldrick, Sr., of Gardena, today was in possession of \$15,000, called for payment to her and her two children of approximately \$15,000. The sum represents a compromise made out of court by the Pacific Electric Railway Company.

The court order provides that \$3000 of the amount is to be paid to the State Industrial Accident Commission, which offered to accept that sum for the \$4588 that had been awarded the widow for the loss of her husband while he was on official duty for the city of Gardena.

The order also provides that \$2048 is to be deposited in the bank to the credit of Virginia Baldrick, and that \$1187 is to be deposited to the credit of Thomas Baldrick, Jr. The balance of \$8818 is to be paid direct to the widow. Fire Chief Baldrick was fatally burned when he attempted to check the flow of gasoline from a tank that had been ripped open by a gondola car last October 21, at the end of a side track. The car had been switched onto the wrong track, with the result that

**Foy Draper Sets New 220 Record**



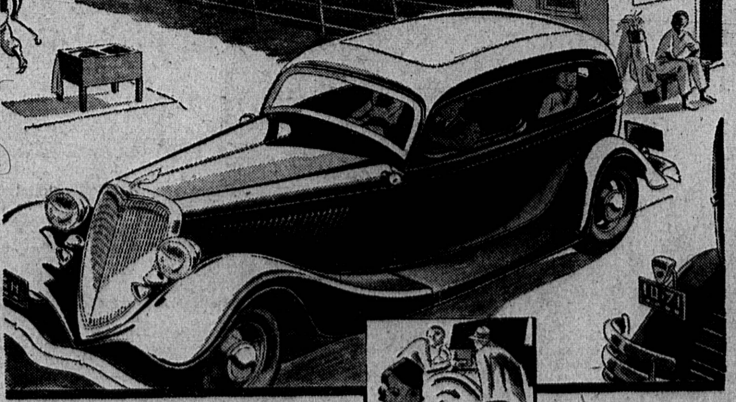
Foy Draper, U. S. C. sprint star, broke the world's record for the 220-yard dash in the Trojans' annual track and field meet with Stanford. Charlie Paddock's record of 21 seconds, set in 1921, went by the boards when Draper finished in 20.9 seconds. The Trojans won the meet 82-2-3 to 48-1-3.

It tore out the "dead man" at the end of the spur and crashed into the oil tanks. and fire. Chief Baldrick was blown some distance, and burned. He died several days later in the hospital.

While Chief Baldrick was trying to stop the gasoline from leaking from the tank a spark was generated that caused an explosion

Read Our Want Ads!

**THE WORLD'S FINEST TYPE OF MOTOR powers America's Fastest Selling Car!**



THE V-type engine hurled a plane through the air at 7 miles a minute... swept a racing car to the land speed record of 270 miles per hour. This V-type superiority largely explains why the Ford V-8 is America's fastest selling car. At 55 the Ford V-8 is just loafing along—effortlessly. Yet it is the most economical Ford ever built. The Ford V-8 offers the riding ease of free action for all four wheels—plus the priceless safety of strong axle construction. Before you buy any car at any price, drive the Ford V-8.

**FORD V8**

SEE YOUR NEAREST FORD DEALER

3514 and up—E. O. B. Detroit. Easy terms through Universal Credit Company—the Authorized Ford Finance Plan

**Driver's Plea of Guilty Complicates Case For Employer**

James J. O'Toole plead not guilty in the Lomita justice court to a charge of employing an unlicensed automobile driver, when arraigned Tuesday and asked for a jury trial which will be held May 15. He was released on his own recognizance.

The case became rather complicated on the plea of guilty entered by the driver, Sam Robinson, arraigned the same day. Robinson received a fine of \$50 or five days, suspended on his appearance with a temporary permit which he obtained the same day and his assurance that he would report to the court as soon as he had received the regulation driver's license from Sacramento.

**CHEERIO CARD PARTY**  
Pacific Electric Cheerio Club will hold their regular card party Saturday evening, May 12, at the home of Mr. and Mrs. Frank Miller, 1804 Arlington avenue. Prizes will be awarded for pokeno, pinochle and 500.

**New Management National Hotel**

Mr. and Mrs. Ed Meador, formerly of Long Beach, have traded property in that city for the National Hotel, owned by Mrs. Nellie Bain, and have taken possession. The hotel has been thoroughly renovated, furnished and redecorated, and will open for business next Saturday. Hotel rooms, light housekeeping rooms, or board and room can be obtained at reasonable rates.

Mr. and Mrs. Meador are experienced apartment house managers and plan to make the National one of the best hotel rooming houses in this section.

**CAT MOTHERED PUPS**  
THE DALLES, Ore. (U.P.)—A large cat owned by Mrs. N. H. Moser insists on mothering two tiny, toy terrier puppies along with her own kittens. The cat nurses and washes the puppies, much to the disgust of their mother. She is undaunted by threats of the dog, no larger than herself.

**SAFEWAY and PIGGLY WIGGLY**

**THURSDAY, FRIDAY AND SATURDAY, MAY 10, 11 & 12. Staple Foods Sale**

- Butter LA FRANCE CHOICE lb. 21c
- Lucerne Eggs LARGE EXTRAS Doz. 19c
- Cane Sugar 10-lb. Cloth Bag 46c 10-lb. Paper Bag 45c
- Flour GOLDEN HEART PATENT No. 5 19c No. 10 35c 24 1/2-lb. Bag 77c
- Jell Well Or Jiffy Lou 3 Pkgs. 13c
- M'mallows Fruit, 1-oz. 2 for 25c
- Doris Jam 1-lb. Pkg. 25c
- Chocolate Bishop's Vanilla 1/2-lb. 13c
- Yolo Catsup 14-oz. Bottle 10c
- Silk's Rice Spanish Style 16-oz. Can 10c
- Ben-Hur Coffee 1-lb. Tin 30c
- Tuna Chicken Fancy 2 No. 1/2 27c
- Oysters Gulf Light 5-oz. Can 10c
- Hormel Pea Soup 20-oz. Can 10c
- A-1 Flour No. 10 4 1/2 24 1/2-lb. Bag 95c
- Beans Philippine 2 No. 2 1/2 15c

- Quality Meats**  
Only the finest quality of fresh and smoked meats, fish and cheese are obtainable in Safeway and Piggly Wiggly owned and operated markets.
- Pot Roast Shoulder Cut of Beef lb. 7c
  - Shoulder Chuck Beef Roast lb. 9c
  - Round Bone Shoulder Roast lb. 12c
  - Prime Rib Beef Roast lb. 14c
  - Pork Leg Whole Leg or Shank Cut lb. 15c
  - Colored Hens Fresh-Dressed Dry-Picked lb. 24c
  - Turkeys Fresh Dressed 8-14 lb. Sizes PER POUND 22c
  - Wieners Frankfurters and Bologna 2 lbs. 25c
  - Pure Lard Sterling Brand 1-lb. cation 7c
  - Ham Wilson's Certified Hammer's Pride FANCY SKINNED Whole or Full Half PER LB. 17c
  - Link Sausage Sterling 1/2-lb. cation 9c
  - Cheese Longhorn or Jack lb. 13c
  - Bacon FANCY EASTERN Whole Slab or Any Piece Except Center—Per Lb. 16c

- For Canning**  
Buy jars now and be ready to do your canning at the season's peak.
- BALL MASON JARS**
- 1/2-Pint Dozen 75c Quart Dozen 95c
  - Pint Dozen 80c 1/2-Gallon Dozen \$1.30
  - Jar Rubbers Regular or Glass Top, Dozen 5c
  - Kerr Jar Caps Regular - Dozen 27c
  - Ball Jar Caps Mason, Zinc - Dozen 25c
  - BREXER RABBIT MOLASSES Gold Label No. 1/2 17c No. 1/2 15c No. 2/2 33c No. 2/2 27c
  - Sweet Pickles Regular or Glass Top, Dozen 27c
  - Morton's Salt Plain or Iodized - 26-oz. Box 7c
  - Snowflakes N.B.C. Soda - 1-lb. Pkg. 17c

- Tomato Catsup Del Monte - 14-oz. Bottle 17c
- Pineapple Libby's Sliced - No. 2/2 20c
- Grandma's Cake 3-Layer Slab—Whole 45c—1/2 23c
- Van Camp's Bean Hole Beans, 26 1/2-oz. 14c
- BEST FOODS** Home Style Salad Dressing Pt. 19c Qt. 32c
- KELLOGG'S** Whole Wheat Flakes A New Breakfast Cereal 3 Pkgs. 20c
- Strongheart Dog and Cat Food 1934-oz. 3 for 3c
- Table Salt Morton's Triangle, 3-lb. box. 9c
- Baker's Cocoa Breakfast - 1/2-lb. Can. 13c
- Calumet Baking Powder, 1-lb. can. 28c

- Fresh Fruits and Vegetables**
- Cantaloupes Imperial, Jumbo 45's 2 For 15c
  - Grapefruit Imperial Sweet, Large, Juicy 5 For 15c
  - New Potatoes White Rose Top Quality 10 lbs. 19c
  - Tomatoes Imperial Valley 2 lbs. 15c
  - Cucumbers Long, Green, Fresh 2 for 5c
  - Green Beans Kentucky Wonder 2 lbs. 15c
  - Onions Crystal White 2 lbs. 5c
  - Rhubarb Choice Cherry 4 lbs. 5c

- Coffee Edwards' 1-lb. Tin 27c Airway Brazilian lb. 19c
- Crisco Pie Tin Free With 2 cans 38c Or One 3-lb. 55c
- Milk MAX-I-MUM EVAPORATED 3 Tall Cans 17c
- Brooms Cecil Bruner 5-sew—each 59c Red Line 4-sew—each 37c
- Bluing White Bonnet, 12-oz. 10c Purex Liquid Bleach, 1/2-gal. 15c
- 20 Mule Team Borax, 10-oz. 11c; 32-oz. 27c Cleanser Holly, Big Red Can 3c
- Borax Chips 20 Mule Team, 22-oz. pkg. 23c
- Toilet Tissue Zee - Per Roll 5c
- Chore Girl Scouring Ball - Each 10c
- Bird Seed French's, 10-oz. pkg. 2 for 25c
- Mustard French Cream Salad, 9-oz. 13c
- TREE TEA** M.J.B. 1/4-pound 12c GREEN 1/2-pound 23c M.J.B. 1/4-pound 17c BLACK 1/2-pound 33c

EVERY FRIDAY IS FAMILY CIRCLE DAY—GET YOUR COPY—IT'S FREE

We reserve the right to limit. None to dealers. Prices subject to change without notice.

**SAFEWAY and PIGGLY WIGGLY**

Meat and produce values at Safeway and Piggly Wiggly operated departments only.

**Old Brazil** MONDAYS 9-9:15 P.M. FRIDAYS 8:45-9 P.M. Brought to you by the packers of **AIRWAY COFFEE** N.B.C. KGO-KFI-KGW-KOMO KHQ-KYLL-KOA-KTAR