

Aesop's Fables

are about as easy to believe as some shoe ads we've seen

yet way down deep in our hearts, we don't feel that any smart woman still thinks she can buy \$15 or \$20 shoes at less than half those prices . . . in spite of the extravagant claims in those ads . . . So—

IF you're tired of "bargains" that turn out badly, you seek genuine foot comfort and smart style, you want honest shoes at honest prices . . .

join the happy thousands that wear

ENNA JETTICK

\$5 SHOES FOR WOMEN \$6

YOU NEED NO LONGER BE TOLD THAT YOU HAVE AN EXPENSIVE FOOT

AAAAA TO EEE SIZES 1 TO 12



Many other smart styles in our stock

Let us fit you correctly, by the Brannock Method

Enna Jettick Melodies, Sunday Evenings, WJZ and Associated Stations



1311-1313 Sartori Avenue, Torrance

ELEMENTARY School Notes

Last week the second grade, in Mrs. Helen Berry's room, wrote invitations to the other first and second grades to come to their George Washington program to be held on Friday. The boys and girls were very happy to accept, and they enjoyed the program.

The little pupils of Room 4, Mrs. Sylvia Nelson's class, were very much pleased to receive one of the large George Washington pictures. Mrs. J. D. Bishop, whose son, Tommy, is a member of the class, requested the privilege of framing the picture.

Girl Scout Troop 79 enjoyed a hike over Palos Verdes hills on Thursday, March 3. Mrs. Edith Bell and Mrs. Frances Mize, parents of two Scout members, very kindly drove the girls to the foot of Duck Head Canyon, where the hike started. Trails were studied and observations were made. Members of the troop who hiked were the following: Anita Bell, Cecilia Tortin, Dorothy Henley, Mildred Lane, Eva Mize, Marjorie Page, Lenore Schroeder, Norinne Schroeder, Annabelle Smith, Ermabelle Smith, Virginia Smith and Opal Thomas.

The Parent Teachers Association will observe Father's night, Tuesday, March 15. An unusually interesting program has been planned for that evening. A good part of the interest will center about a minstrel show, in which boys and girls of the school will display their talent. Mrs. Juliet Young is chairman of the program for the evening.

The spirit of George Washington, which began its immortal march through American history more than 200 years ago, swept across the stage of the Torrance school in the colorful and brilliant bicentennial program held a few weeks ago. As a part of this interesting program, Mrs. Juliet Reed Brown, teacher of elocution, and mother of Mrs. Mabel Ella Sweet, teacher in the school, read portions of a most inspiring ballad play, entitled "Washington, the Man Who Made Us," written by Percy Mackaye. Mrs. Brown read the scenes following: 1.—The Lad and the Soil; 2.—A Big Acre to Garden, and 3.—Home and Peace from Act I, which has Mount Vernon as a background. Some of the teachers were so interested in the dramatic presentation that they are now reading the remaining acts of the book.

Supervisors in the penmanship department of the Los Angeles city schools visited the school, Monday, March 7. They demonstrated a small instrument, which was invented by Mr. R. E. Watt, head supervisor. This little slider is very helpful in the process of learning arm movement. The visiting instructors thought the pupils were very much interested in the use of the little apparatus.

Court Grants Annulment to Rev. Ingersoll

Final Chapter in Modern Enoch Arden Case Is Written Monday

LOMITA.—Annulment of the marriage ties between Rev. Harold E. Ingersoll, former pastor of the Lomita Presbyterian church, and Genevieve Foster Nelson Ingersoll, on Monday, March 7, in Judge Call's court, Los Angeles, brought the final chapter in a modern Enoch Arden domestic tragedy.

Rev. Ingersoll and Mrs. Nelson were married in May 1929. In February 1931, the couple separated and Mrs. Ingersoll went to the home of her parents in Anaheim. Rev. Ingersoll filed suit in Los Angeles for annulment on the ground that a former husband of his wife, R. P. Nelson, supposed to be dead, was still alive. Nelson, who disappeared in 1923, was found to be a member of the Los Angeles city fire department at Terminal Island.

Following Rev. Ingersoll's action, Mrs. Ingersoll filed suit in Anaheim for divorce. Later Rev. Ingersoll's suit was brought on the ground of fraudulent misrepresentation at the time of marriage.

Mission Play To Close Sunday

Sunday, March 13, will be the final showing of the "Mission Play" at San Gabriel in its twenty-first season. John Steven McGrouarty, author and producer, announced yesterday. The famous pageant drama closes its doors until 1933 with the farewell matinee on Sunday.

To enable last minute playgoers to witness a performance this year a schedule of daily matinees will be adhered to with a special matinee on Sunday. Two shows will be given Saturday night.

Special trunk lines have been installed in the San Gabriel playhouse to facilitate the making of reservations. A call to either SYcamore 3697 or ALhambra 4180 will get immediate attention—McGrouarty said.

Read Our Want Ads

At SAFEWAY . . . EVERY BUSINESS DAY — 5000 TONS !



Through a steady rolling volume of 5,000 tons of food daily, Safeway is enabled to supply first-quality fresh food at consistently low prices. On Monday of this week Safeway announced a new low price on bread. Although a substantial reduction in price is in effect, we want our friends to know there will be no change in quality. Another important announcement this week of unusual interest to Safeway customers is a new price of nine cents per quart for fresh milk. This is Lucerne "Grade A" milk—a grade which tests twenty per cent richer than required by the state law. That's Safeway quality, and that's the quality Safeway prices represent in our advertising.

BREAD FEATURE AND TOASTEE ONE POUND LOAF BOTH KINDS 5c
24-oz. Loaf Feature—Seven Cents.

FRESH MILK LUCERNE GRADE A MILK, 21% RICHER THAN THE STATE LAW REQUIRES. Per Quart 9c

- MAYONNAISE Best Foods, pint jar 29c
- DEL MONTE CATSUP 14-oz. bottle 15c
- DEL MONTE PINEAPPLE Sliced, No. 2 1/2 can 15c
- HILLSDALE PINEAPPLE Broken sliced, No. 2 1/2, 2 cans 25c
- FRUIT FOR SALAD Libby's, No. 1 can 17c
- CORNED BEEF HASH Libby's, No. 2 can 21c
- AIRWAY COFFEE Ground fresh when you buy it, lb. 17c
- MORTON'S SALT, Iodized or plain, 26-oz. pkg. 10c
- FORMAY SHORTENING (formerly Parfay) 3-lb. can 63c; lb. can 23c
- MAX-I-MUM SYRUP Cane and maple, pint jug 21c
- FANCY RICE River Brand, 2-lb. pkg. 15c
- LOCAL LARGE LOMITA Eggs, doz. 19c
- LA FRANCE Butter, lb. 25c
- ASS'T CHOCOLATE CAKES National Biscuit Co., lb. 25c

- SOUP Through a special purchase of Van Camp's famous tomato soup, Safeway is able to offer its customers a splendid value. This week-end. This is the full 10 1/2-ounce size and we invite you to buy several cans, each 5c
- MILK Max-i-mum Brand is becoming an outstanding favorite with Safeway customers. This is our regular price on the tall can. Do not pay more than five cents for canned milk. Buy it at Safeway. 5c
- BEANS Campbell's famous, nationally advertised, best and beans at five cents per tin for the large 16-ounce size. A full pound of baked beans prepared in rich tomato sauce—almost a full dinner—for five cents, per tin 5c
- PEACHES Max-i-mum or Safeway Brand. These are the large Gloria halves in heavy, rich syrup. No finer value available in canned fruit. 2 No. 2 1/2-size tins 25c
- SUGAR Finely granulated pure cane sugar. Ideal for all table purposes. This is Safeway's regular price. In cloth or paper bags, 10 pounds 43c
- CLEANSER Here is a real household special—Crystal White Cleanser, 4 cans for ten cents. This is two and one-half cents each, and the 4 tins will take care of your household needs for several weeks. 4 tins 10c
- POP CORN The popular Jolly Time Brand of selected kernels, in the tin container. It will keep in proper popping condition indefinitely, 3 1/2-ounce size, 2 tins 25c
- FREE One Betty Crocker Biscuit Baker (easily worth fifty cents) with each purchase of a 40-ounce package of Bisquick, the new prepared biscuit flour. The finest biscuits you ever imagined in less than five minutes. Just add milk, mix and place in the oven. 2 1/2-pound package 35c

- PURE HONEY Bee Farm brand, 5-lb. can 39c
- DELGADO PURE HONEY Fancy orange, 24-oz. jar 33c
- SUPERIO MACARONI 8-oz. package 7c
- WESSON OIL Pure, clear, for cooking or salads, qt. can 53c
- MAZOLA SALAD OIL Quart can 39c
- PEANUT BUTTER Max-i-mum, 1-lb. jar 15c
- PRUNES Medium size, 4 lbs. 19c
- MOTHER'S COCOA 2-pound can 19c
- DINA-MITE HEALTH CEREAL, 24-oz. pkg. 22c
- SCOT TISSUE Toilet paper, 3 rolls 25c
- SCHILLING'S EXTRACTS Lemon, Vanilla, Almond, 1-oz. bottle 15c
- SCHILLING'S SPICES (Ground) cinnamon, cloves, ginger, nutmeg, sage, 2-oz. 10c
- LUCERNE MILK Grade A, pint 6c; quart 9c
- LUCERNE TABLE CREAM Grade A, 1/2-pint 14c
- LUCERNE BUTTERMILK Real churned, quart 10c

PORK LEGS

Whole or Half Per Pound 12c
Safeway has obtained a large quantity of fine Eastern, grain-fed pig pork legs. For those who enjoy a real, fine pork roast for Sunday dinner we suggest that you decide on this splendid value. Delicious, tender pork, well-browned—piping hot gravy, browned potatoes, with that appetizing sage-and-onion dressing. Serve with applesauce. As a vegetable we suggest fresh green peas, which are offered this week in Safeway vegetable depts.

BEEF ROAST

Per Pound 10c
Genuine baby beef in prime condition for a marvelous pot-roast. Ask your Safeway meatman to select your favorite cut. Your family will enjoy the fine quality, and at this price this beef special represents one of the finest values offered this season.

SEA BASS

Per Pound 15c
For Lenten menus we have secured a large quantity of strictly fresh sea bass—10,000 pounds taken from the waters of Lower California. This fish value will please the most particular.

SLICED BACON

lb. 25c
Swift's finest quality. No rind and no waste—just good, sugar-cured bacon, ready for your Sunday morning breakfast.

FRESH GREEN PEAS

Per Pound 10c
Direct from Imperial Valley, Safeway has obtained a shipment of sweet, tender, new peas—just the thing to go along with one of those pig-pork roasts. Give the family a real treat with a large dish of early Spring garden peas.

CANNONBALL CABBAGE

Medium Size Per Pound 3c
The famous, hard Cannonball Brand from the fields of Imperial Valley. The heads are unusually solid—each leaf crisp and sweet. Do not confuse this value with ordinary cabbage. With a sharp knife, chip a cube out of the stem and place the head in ice-water for two hours—change the water and cook in an open kettle. This gives cabbage a marvelous fresh flavor.

Today's Tested Recipe

Hearty appetites call for "filling food," and this new version of lima beans is sure to call for an "encore."

Creole Lima Beans
3 cups cooked lima beans
2 cups canned tomatoes
2 bay leaves
1/2 teaspoon each of salt, pepper, pork or bacon and paprika
2 medium dry onions, chopped
Brown diced pork slightly, add onion and seasoning, and simmer till tender. Add cooked beans and tomatoes, cook 15 minutes and serve very hot. This makes 6 average servings.

Safeway Homemakers' Bureau most cordially invites you to write for any information you desire, be it a recipe, a budget, a party plan, etc. Simply enclose a large self-addressed stamped envelope with your request to Julia Lee Wright—Safeway's "Homemakers' Bureau," Care of Safeway Stores, Inc., P. O. Box 774, Oakland, California.

NAVEL ORANGES

2 doz. 25c
Large in size, very juicy and thin-skinned. Easy to peel for slicing, dicing, or for fruit salad and cocktail service.

WASHINGTON APPLES

4 lbs. 25c
The famous "Delicious," the king of eating apples, firm and flavorful.

ALL PRICES IN THIS ADVERTISEMENT EFFECTIVE THURSDAY, FRIDAY, SATURDAY, MARCH 10-11-12

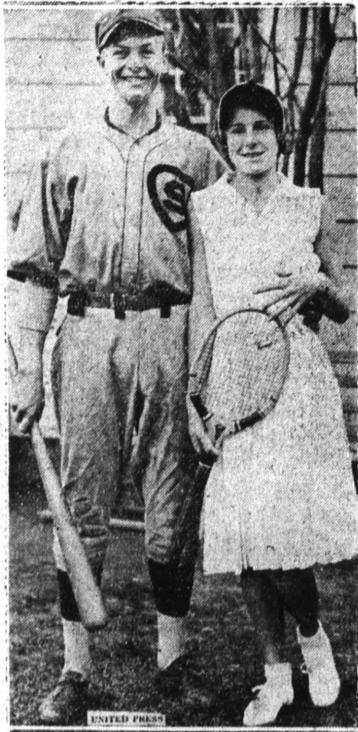
Meat prices Effective Only in Safeway Owned Markets

SAFEWAY STORES

DISTRIBUTION WITHOUT WASTE

Produce Prices Effective Only in Safeway Owned Stands

Baseball-Tennis Romance



Wedding bells will ring next May for Stanley Hack, youthful Sacramento baseball star who recently joined the Chicago Cubs, and Dorothy Weisel, also of Sacramento, who is ranked in the top bracket of American women tennis players. They have just announced their engagement.

Flyer to Seek Hawaii-U. S. Honors



L. H. McCurley, former army aviator now on the Hawaiian Hills, on the island of Hawaii, is the latest pilot to plan a westward flight to the mainland, a feat thus far never performed. With Lyman Tucker, island newspaperman, McCurley plans to take off in April from Oakland, Calif. He is shown here with one of the small planes he files on the island.