



Sam Levy . . . Torrance

Jersey Dresses

Light But Warm
Inexpensive But Smart
No Two Alike
Cleverly designed, all different. A wide diversity of charming colors. Especially priced at

\$5.95

COATS \$16.75

Fur Trimmed
Never have we seen such values in Coats. Exquisite fabrics, modishly fashioned and trimmed with generous big fur collars and cuffs, excellent pelts. Beautifully lined in heavy silks. Extreme Values in Sport Coats as well as Dirk Dressy Coats at \$16.75 and up.



Holeproof Hosiery

Supreme Values!

FOR MEN . . .

HOLEPROOF AUTOGARTS
Self-Supporting Socks with Elastic Top. — Guaranteed. Special. "Get-Acquainted" Offer. — New Stock.

39c PAIR

Ladies' Holeproof Hose

Chiffon or Service Weights. All new shades in fresh new hose just received.

Per pair \$1



SAM LEVY
1311-1313 Sartori Avenue, Torrance

ON THE LINE OF MARCH

(Continued From Page 1-A)
tures of one another while the program was going on?

Those Red Cross nurses, Miss Maxwell and Mrs. Worcester, looked pretty smart in their wartime uniforms. Miss Maxwell served overseas as an anesthesiologist. O. well, she put 'em to sleep with ether or chloroform; and Mrs. Worcester was in the third Red Cross replacement group that worked in France.

Private and aside to Councilmen Nelson and Steiner: You were A. W. O. L. at the parade — how about it?

That was Cadet Captain Shaw who drilled the Military Academy cadets—and he was assisted by Adjutant Lieutenant Carpenter. They certainly put the boys through their paces.

There's something to consider seriously when you think that only two Grand Army of the Republic members were present yesterday. Those "boys in blue" are fast joining their comrades "in the West." We salute you, "Grampa" Mendelssohn and J. B. Moses!

Where were the rest of the Legion, Kiwanis and Rotary club members?

Earn

6%

On What You Save

Torrance Mutual Building and Loan Association Auditorium Building



He's Off . . . to a Merry Christmas!

"Penco Flyer"



Steel Wagon

Everything a boy wants in a wagon. . . brake, 10" balloon type wheels . . . chrome plated handle and hub caps, full 33" x 15" steel body . . . and it's finished in bright enameled maroon color.

\$4.98

Others 79c up



The Youngsters will Shout with Joy

"Little Jim"

Veloci-pede

A well-made velocipede. Front wheel ball-bearing type. Adjustable coil spring saddle, rubber grips and pedal. For the 2 or 3 year old child.

\$5.90

Others \$2.98 up



Big dolls—
Little dolls—
Lady dolls—
Baby dolls—

Hurry—hurry—hurry— all the dolls in Toyland are waiting to see you! The smart lady dolls are tapping their heels impatiently— while the baby dolls are crying "mama" 'cause they want you to take them home for your very own! And mother won't mind which one you choose because even the nicest of the nice dolls cost very little at Penney's!

ALL the Dolls have the smartest new clothes!



Doll Cart

\$2.98

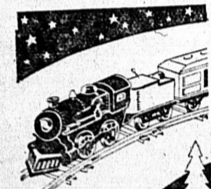
An item on any little girl's Christmas list . . . make it a merry Christmas . . . and a THIRTY one too! Others \$1.98 up



Junior Pool Table

Just the gift Junior wants, too. 44" x 23", 20" high, two 36" maple cues, 16 numbered balls. Net pockets. **\$4.98**

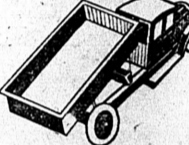
Others 98c up



Electric Train

Choo . . . choo . . . and off they go for a jolly Christmas! Locomotive, with electric head light, tender, baggage, passenger and observation cars, track with outside circumference of 102"

6.90



"Little Jim" Dump Truck

For the little boy who likes to make believe he's a big builder. 23 1/2" long and 7" high, it will be a welcome gift. Other Steel Toys 23c, 49c

J.C. PENNEY CO.

1269 SARTORI AVENUE

TORRANCE, CALIF.

ASSOCIATED GROCERS

TORRANCE AND LOMITA MEMBERS
INDIVIDUALLY OWNED STORES

Savings Here That Count!

SUGAR
Brown or Powdered
2 1-lb. pkgs. **13c**

OCEAN SPRAY
Cranberry Sauce
No. 1 can **21c**

HARVEST INN
Corn No. 2 can **10c**

SOAP SPECIAL
White King **Machine Soap**
(1 Med. Size Pkg.)
Mission Bell **Toilet Soap**
(One Bar)
Both for 25c

S.O.S. Cleanser
Quick Large Effective pkg. **21c**

DEL MONTE
PUMPKIN
No. 2 can **15c**

SPECIALS FRIDAY AND SATURDAY, NOVEMBER 13 & 14

NONE SUCH
Mince Meat
9-oz. pkg. **14c**

R & R
Plum Pudding
1-lb. tin **28c**

DROMEDARY
Dates 10-oz. pkg. **20c**

DEL MONTE **CATSUP** Pint bottle **15c**

H-O Oats
Popular Hot Cereal
2 Small for **25c**

Soda Crackers
2 1-lb. pkgs. **29c**

Balto Dog Food, 3 pkgs. **20c**

Food, 3 pkgs. **20c**

Bess Milk
3 tall cans. Extra-rich milk
3 for 17c

Del Monte **Peaches**
Sliced
Special on No. 1 can **10c**

LOOK FOR THE "RED & WHITE" SIGN

Woodburn's Grocery
1801 CABRILLO, TORRANCE

G. H. Colburn
645 SARTORI, TORRANCE

Central Market
A. B. Gardner, WESTON ST. LOMITA

Harder's Market
1521 MADRID, TORRANCE

WHALERS TO WORK
VICTORIA, B. C.—(U.P.)—The Victoria whaling fleet, which broke a long record by not going to sea this year will be sent out next spring, providing the whale oil market rights itself, according to William Schrupp of Bellevue, Wash., president of the Consolidated Whaling Corp. and the American Pacific Whaling Co.

Moving
PHONE TORRANCE
53
Tolson Transportation System, Inc.
1230 Border, Torrance

SAN FRANCISCO Every Day except Saturday
\$18 YALE OR IROQUOIS ROUND TRIP 10 DAY RETURN LIMIT ONE WAY \$13
From L. A. Harbor at 4 p.m.

Meals, Bath, Dancing, Ticket All included in the Fare!
TO SAN DIEGO . . . Every Saturday and Sunday. Round tri. \$5. One way \$3

Through connection via Motor Coach Company
LASSCO
1444 Normandie 2-46
Lomita—Tel. 28 Torrance—Tel. 4
730 So. Broadway, Los Angeles
Tel. Vanda 2821

TO LIQUIDATE TWO TRACTS IN BIG SALE

T. J. Nestor announces the liquidation of two big tracts at approximately one-fourth of the original price in an advertisement published in today's Herald. The liquidation consists of around 500 lots and acreage at Nestor's West Compton tracts, one mile west of Compton's P. O. station on Riverside-Redondo boulevard and Nestor's two and one-half miles north of Wilmington on Broadway and Main at East Road, directly east of Torrance.

All improvements are in both of these tracts, including water, light, gas, telephones, and the surveys are in and paid for with no assessments to purchasers. The sewers are laid in Nestoria. According to the liquidator, these two large tracts must be disposed of in 20 days and their sale offers one of the very best investments in the county for families of moderate means. Because these tracts are adjacent to the Harbor District and Los Angeles, they should be attractive to the home builder.

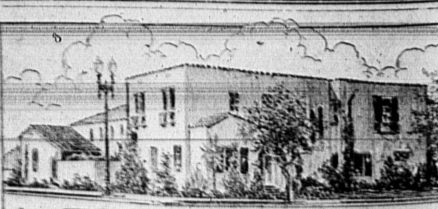
Nestor also has arranged that he is offering at liquidation prices at Nestoria. He says it is estimated that there are 20,000 high salaried people working within four and one-half miles of there. A great many of these people need homes and at the greatly reduced prices of land it would be a fine location for contractors or builders to construct small four or five-room homes.

BORN WHERE?
LOS ANGELES.—(U.P.)—The stock made a forced landing here the other day, and a son was born in the 11th street police station to Mrs. Sophie Malone. The mother was in a police ambulance en route to the hospital.

PROPHETS PLEASE NOTE!
ROSEVILLE.—(U.P.)—Winter weather note: Lilacs are blooming here in the front yard of the A. MacPherson home. Ordinarily they wait until spring to blossom.

NAME'S 'S-ALL RIGHT
SALINAS.—(U.P.)—"Josh X. Smith" he told the desk sergeant. So the prisoner was booked by that name—the first person to be arrested here on charges of drunken parking.

PLUMBING and HEATING
NEW CONSTRUCTION and REPAIR WORK
"The Plumber with a Conscience"
Phone Gardena 1481 and tell Operator to "Reverse Charges"
JEFF CLARK
Licensed Plumber in Torrance, Gardena and Los Angeles
1105 W. 162nd Street Gardena, California



STONE and MYERS
Funeral Directors
Licensed Embalmers
TORRANCE: Cravens at Engracia Telephone 195
LOMITA: 1204 Narbonne Ave. Telephone 347
AMBULANCE SERVICE