

Fern Avenue School Sewer Must Be Paid

Any attempt by the city to place the entire burden of financing sewer lines to the proposed new Fern Avenue school on the property owners in the district...

Penny Earnings Up For First 6 Months 32c Share Increase

The J. C. Penny Company reports net earnings for the six months ended June 30, 1931, of \$1,230,000...

Read Our Want-Ads

OETKIN'S Independent Grocery

Featuring Newmark's Goods for Quality and Best Bargains

SPECIALS—Friday and Saturday

Table listing grocery items and prices: Tropic Sliced PINEAPPLE, Tropic Sliced or Yellow Cling PEACHES, Golden Rod COFFEE, Golden Rod SWEET POTATOES, Newmark's Medium Size Cans PORK AND BEANS, Tall Cans MILK, Blue Tip MATCHES, Golden Rod BUTTER.

We Give S. & H. Green Trading Stamps DOUBLE STAMPS ON SATURDAY

1001 SARTORI AVE. PHONE 85-J

CHURCHES

"GO TO CHURCH SUNDAY"

Church notices to be secured of publication, should be in the Herald-News office before 10 a. m. Tuesday...

FIRST CHRISTIAN

Evangelical service, 11:30 a. m. Sunday school, 9:30 a. m. Morning service, 10:30 a. m.

CENTRAL EVANGELICAL

Corner Marston and Arlington. O. D. Wender, minister. Sunday school, 9:45 a. m.

METHODIST EPISCOPAL

21 Prado and Mission. Wm. J. Winder, pastor. Phone 174-J. Sunday school, 9:30 a. m.

CHRIST EPISCOPAL

1450 Broadway. A. H. Decker, pastor. Morning service, 10:30 a. m.

SEVENTH DAY ADVENTIST

Western and Walnut streets. Lomita. C. Phillips, pastor. Sabbath school, 9:45 a. m.

FIRST CHURCH OF CHRIST SCIENTIST, TORRANCE

Women's club house, Engracia street. Sunday services, 10 a. m.

CATHOLIC CHURCH OF THE NATIVITY

Corner 1st and Mission streets. Rev. D. Hurley, pastor. Phone 141. Mass celebrated Sundays at 7:30 and 9:30 a. m.

TORRANCE MEN'S BIBLE CLASS

A Bible class for the men of the community by the men of the community. Sessions held each Sunday morning at 9:30 o'clock.

CATHOLIC

Western street, Lomita. Vincent Russell, D. D., Ph. D., pastor. Mass celebrated Sundays at 8:30 a. m.

CHURCHES OF CHRIST, SCIENTIST

"If we live in the Spirit, let us also walk in the Spirit." These words from Paul's epistle to the Galatians, constitute the Golden Text in the Lesson-Sermon on "Spirit," Sunday, August 9.

FIRST EVANGELICAL LUTHERAN

Corner Amata and Schott. Rev. H. Schneider, pastor. 109 West Rockham street, Inglewood. Phone 1674. Sunday school, 9 a. m.

W. C. T. U. MEETS FRIDAY

The Torrance branch of the W. C. T. U. will meet tomorrow, Friday afternoon at 2 o'clock with Mrs. G. D. Wender at the Evangelical church parsonage, 1814 Macaulay street.

AMERICAN CHURCH OF CHRISTIAN HEALING AND PHILOSOPHY

1155 California. Rev. M. P. Cameron, pastor. Phone 877. Morning service at 11 o'clock.

COMMUNITY PRESBYTERIAN

1200 Broadway. Rev. J. M. Fullam, pastor. Sunday school, 9:30 a. m. Morning service, 11 o'clock.

SPIRITUAL AND PSYCHIC SCIENCE CHURCH NO. 43

121 N. Bond, Redondo Beach. Rev. Mary E. C. Newman, pastor. Sunday services: Healing service at 7:30; lecture at 8:30.

CHURCH OF THE NATIVITY

Corner 1st and Mission streets. Rev. D. Hurley, pastor. Phone 141. Mass celebrated Sundays at 7:30 and 9:30 a. m.

TORRANCE MEN'S BIBLE CLASS

A Bible class for the men of the community by the men of the community. Sessions held each Sunday morning at 9:30 o'clock.

CATHOLIC

Western street, Lomita. Vincent Russell, D. D., Ph. D., pastor. Mass celebrated Sundays at 8:30 a. m.

CHURCHES OF CHRIST, SCIENTIST

"If we live in the Spirit, let us also walk in the Spirit." These words from Paul's epistle to the Galatians, constitute the Golden Text in the Lesson-Sermon on "Spirit," Sunday, August 9.

Only One Out Of 100 Is Unable To Read and Write

By the United Press. SACRAMENTO—Literacy is decreasing in California. Although the state has made great gains in literacy, a recent study by the United States census bureau shows a preliminary checkup showed only one out of 100 is unable to read and write.

Second Union Church Service Sunday Will Open at Evangelical

The second in the series of Union Church services will be held at the Evangelical church Sunday evening, August 8, at 7:30 o'clock. Rev. George Elder, pastor of the First Christian church of this city, will be in charge.

CHRISTIAN SCIENCE LECTURE RADIOCAST

Residents of Torrance will have an opportunity to hear a radio-cast lecture on Christian Science on KFOX Tuesday, August 11, at 8 o'clock.

FOUR SQUARE GOSPEL

Torrance boulevard and Oca street. Rev. J. Chris Galbreth, pastor. Sunday school, 9:30 a. m.

FIRST EVANGELICAL LUTHERAN

Corner Amata and Schott. Rev. H. Schneider, pastor. 109 West Rockham street, Inglewood. Phone 1674. Sunday school, 9 a. m.

W. C. T. U. MEETS FRIDAY

The Torrance branch of the W. C. T. U. will meet tomorrow, Friday afternoon at 2 o'clock with Mrs. G. D. Wender at the Evangelical church parsonage, 1814 Macaulay street.

AMERICAN CHURCH OF CHRISTIAN HEALING AND PHILOSOPHY

1155 California. Rev. M. P. Cameron, pastor. Phone 877. Morning service at 11 o'clock.

COMMUNITY PRESBYTERIAN

1200 Broadway. Rev. J. M. Fullam, pastor. Sunday school, 9:30 a. m. Morning service, 11 o'clock.

SPIRITUAL AND PSYCHIC SCIENCE CHURCH NO. 43

121 N. Bond, Redondo Beach. Rev. Mary E. C. Newman, pastor. Sunday services: Healing service at 7:30; lecture at 8:30.

CHURCH OF THE NATIVITY

Corner 1st and Mission streets. Rev. D. Hurley, pastor. Phone 141. Mass celebrated Sundays at 7:30 and 9:30 a. m.

TORRANCE MEN'S BIBLE CLASS

A Bible class for the men of the community by the men of the community. Sessions held each Sunday morning at 9:30 o'clock.

CATHOLIC

Western street, Lomita. Vincent Russell, D. D., Ph. D., pastor. Mass celebrated Sundays at 8:30 a. m.

HAY FEVER BRIGADE



Naturally one of the requirements for entrance in the farm-ware contest at Los Angeles County Fair is to be born Sept. 15 to 27 in that the participants are not addicted to hay fever.

JOB'S DAUGHTERS TO MEET

Job's Daughters are instructed to meet Thursday night at 8 o'clock for about deputy instruction night. Officers are especially urged to attend.

TORRANCE HERALD. Are You Looking For A Furnished Home? Then Read The Torrance Herald Want-Ads.

FOUR SQUARE GOSPEL

Torrance boulevard and Oca street. Rev. J. Chris Galbreth, pastor. Sunday school, 9:30 a. m.

FIRST EVANGELICAL LUTHERAN

Corner Amata and Schott. Rev. H. Schneider, pastor. 109 West Rockham street, Inglewood. Phone 1674. Sunday school, 9 a. m.

W. C. T. U. MEETS FRIDAY

The Torrance branch of the W. C. T. U. will meet tomorrow, Friday afternoon at 2 o'clock with Mrs. G. D. Wender at the Evangelical church parsonage, 1814 Macaulay street.

AMERICAN CHURCH OF CHRISTIAN HEALING AND PHILOSOPHY

1155 California. Rev. M. P. Cameron, pastor. Phone 877. Morning service at 11 o'clock.

COMMUNITY PRESBYTERIAN

1200 Broadway. Rev. J. M. Fullam, pastor. Sunday school, 9:30 a. m. Morning service, 11 o'clock.

SPIRITUAL AND PSYCHIC SCIENCE CHURCH NO. 43

121 N. Bond, Redondo Beach. Rev. Mary E. C. Newman, pastor. Sunday services: Healing service at 7:30; lecture at 8:30.

CHURCH OF THE NATIVITY

Corner 1st and Mission streets. Rev. D. Hurley, pastor. Phone 141. Mass celebrated Sundays at 7:30 and 9:30 a. m.

TORRANCE MEN'S BIBLE CLASS

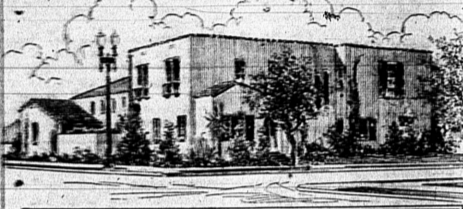
A Bible class for the men of the community by the men of the community. Sessions held each Sunday morning at 9:30 o'clock.

CATHOLIC

Western street, Lomita. Vincent Russell, D. D., Ph. D., pastor. Mass celebrated Sundays at 8:30 a. m.

VACATION means more if they hear from you frequently by Telephone!

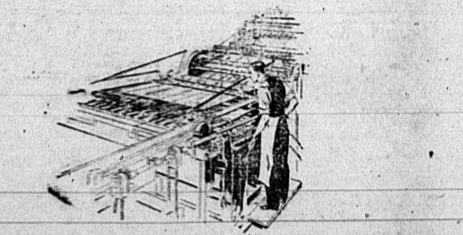
Telephone! It's only seconds to TAHOE, YOSEMITE, LA JOLLA, SANTA CATALINA, BIG BEAR LAKE and all Vacation Land. SOUTHERN CALIFORNIA TELEPHONE COMPANY.



STONE and MYERS Funeral Directors. Licensed Embalmers. TORRANCE: Cravens at Engracia Telephone 195. LOMITA: 1204 Narbonne Ave. Telephone 347. AMBULANCE SERVICE.

Read Our Want-Ads Read Our Want-Ads

BUILDERS OF CALIFORNIA



Suppose all Presses Stopped tonight

IMAGINE a world without the printed word—every field of human endeavor handicapped! Printing, in this state, is both a great industry and a fine art.

More than 14,000 Californians are employed in printing and allied industries. Yearly expenditures for wages and materials exceed 65 million dollars. Successful plan operation requires sound use of commercial credit, as well as dependable banking service.

Bank of America National Trust & Savings Association

TORRANCE - Advisory Board - Frank Salmone, CHAIRMAN - A. P. Stearns, VICE-CHAIRMAN - Lambert J. Ault, F. H. Stranahan - A. Brady Wolfe - C. W. Koenig - Officers - J. W. Leach, MANAGER - Alfred Reinertson, ASSISTANT CASHIER



Drivers of sixes never want less

because it takes six cylinders to give the smooth, silent power that makes driving really enjoyable

Drivers of sixes are spoiled for anything less. Drivers of sixes are sold on multiple cylinders. They would no more think of giving up "six" performance than any other real advancement of motoring.

NEW CHEVROLET SIX

See your dealer below

TORRANCE MOTOR COMPANY. Marcelina at Cravens, TORRANCE. BOYD A. WALKER, Phone 127. West's Garage, LOMITA, CALIF.

DEBRA RADIO CO. Repairing and Service Our Specialty on ALL MAKES OF SETS. Dealers for Atwater-Kent, Spartan, Royale, Jackson-Bell. Phone 370-W. Post and Cravens.

9 of the 10 largest printing companies in California are depositors in Bank of America.