

# MACMARR STORES

**What Shall I Serve for Breakfast, Lunch, Dinner**

The question of what to serve puzzles most every housewife. It really takes hours of time to plan 1000 meals every year—meals that will please and satisfy the entire family. Let MacMarr Stores make it easier for you! Just come to the store with a pencil and pad of paper or just leisurely look around and plan your meals from the hundreds of suggestions you find on the shelves and in the displays. You'll be delighted with the ideas you will get from actually seeing these inviting foods!

Prices Effective, Thursday, Friday, Saturday—August 21, 22, 23

**Special Offer**  
Makes lighter—fluffier cakes  
(21 Lbs. Net)  
**Package .29c**  
1 beautiful Cake Plate FREE—with each package.

**Introducing: Economy Coffee!**  
A full bodied well flavored coffee. It is wonderful value at  
**Pound . . . . . 19c**  
(Regular price 25c lb.)

**BEVERAGES**  
Keep your ice box well stocked these warm days with your favorite beverages.

**Piedmont Gingerale-Pale Dry**  
(Bottled exclusively in the MacMarr Stores)  
**12 oz. Bottles, Each . . . . . 12 1/2c**  
**Carton of 12 . . . . . \$1.39**

**C. & C. Gingerale**  
The large economical home size bottle.  
**1 Pint 13-oz. Carton of 6 . . . \$1.63**

**East Side, 11-oz. Bottle . . . 10c**  
**Carton of 12 . . . . . \$1.19**  
Dark or light.

**Hires Root Beer Extract**  
An invigorating, healthful beverage, wholesome for children and grownups. 3 oz. bottle—makes 5 gallons of root beer.  
**Bottle . . . . . 22c**

**MAZOLA**  
Spells economy in making mayonnaise.  
**Quart Can . . . . . 43c**

**Kingsford Corn Starch**  
For a change, try a quickly prepared boiled custard, seasoned with crushed pineapple.  
**1 lb. Package . . . . . 13c**

**Crushed Pineapple Libby's or Del Monte**  
One of the most healthful of all fruits. Delicious for cocktails, salads, puddings, pies, cake fillings, ice cream, etc. A GOOD VALUE.  
**No. 2 Can . . . . . Only 21c**

**Fannings Bread and Butter Pickles**  
Old fashioned pickles like Grandmother's.  
**5-oz. Glass Jar . . . . . 22c**

**Lipton's Yellow Label Tea**  
Instantly refreshing, for tired nerves. The really delightful health drink. Rebuilds energy.  
**1/2 Lb. Package . . . . . 42c**

**Best Foods Products**  
For enriching sandwiches or salads.  
AYONNAISE )  
DISH SPRED ) PINT JARS  
THOUSAND ISLAND )  
**Our Choice, Each . . . . . 33c**

**Beechnut Spaghetti**  
Already prepared with cheese and tomato sauce. Simply heat and serve.  
**1 Lb., 1 Oz. Can . . . . . 12 1/2c**  
**Kerrs Fancy Strawberry Jam**  
Pure fruit and sugar only.  
**3 Lb. Glass Jar . . . . . 59c**

## MACMARR QUALITY MEATS SOLD FOR LESS

**BEEF** Pot Roasts (Prime Steer) lb. . . . . 15c-12 1/2c  
Boiling Meat . . . . . lb. 12 1/2c-9c

**VEAL**—Chuck Roasts lb. 22 1/2c-18c  
Fancy Milk Veal

**Roasts Pig Pork** lb. 15 1/2c  
(Shoulder Cuts)  
**Loins Pig Pork . . . lb. 26c**  
(Center Cuts, 3c lb. extra)

**HAMS** Swifts Premium (Skinned) lb. 31c  
Swifts Empire (Skinned) lb. 18c  
Butt End (Parts) lb. 23c

**BACON BACKS . . lb. 27 1/2c**  
(Half or Whole)  
**Sliced Back Bacon lb. 32c**  
**Fancy Sliced Swifts Bacon . . lb. 39c**

**FISH**  
Sarracuda (Half or Whole) . . . lb. 14c  
Sliced . . . . . lb. 16c  
Fillet of Sole . . . . . lb. 35c

Swifts New and Perfect Shortening lb. 33c

## FRUITS and VEGETABLES

<b>Corn</b> Large Green Ear, Tender Kernels Doz. . . . . 35c	<b>Peaches</b> Local, Elbertas 7 lbs. . . . . 25c	<b>Grapes</b> Thompson's Seedling—Large Clusters, High Sugar Content 4 lbs. . . . . 10c
<b>Grapes</b> Muscats—Large Size, Fine Flavor 7 lbs. . . . . 25c 4 lbs. . . . . 15c	<b>Potatoes</b> Stockton Burbanks—Medium Size, Well Matured 8 lbs. . . . . 25c	<b>Bananas</b> Large, Ripe Fruit 5 lbs. . . . . 25c

### HI SCHOOL HI LIGHTS

Following the example of several other boy friends, Ralph Daugherty carried a pin. For a day he carried it around in his mouth. At the end of the day Ralph disappeared. His friends found him not feeling so good a little while later. The cause for this sudden attack isn't known but it looks mighty suspicious. Ralph hasn't been seen with his pipe since.

Norma Inappart says she likes to go to the beach more than anything else. She must have forgotten about one thing when she decided this fondness. When Norma gets up in the morning and before she goes to sleep, at night she is playing bridge. She probably sleeps with a pack of cards so she won't lose any time getting them.

Although Rudy Huber, John Young, Park Montague, Paul Lessing, and Ralph Daugherty planned to sleep on comfortable beds recently, they were a little disappointed. They left their bedding lying on the porch while they went for a ride. When they came back and crawled into their beds a series of sneezes and yells disturbed the still night air. The next time they left they took their bedding with them. This event took place at Laguna Beach where Det. Hanson was entertaining a few guests over the week end.

Lawrence Stevenson has been spending the summer keeping his family car on the road and increasing the mileage. He also keeps Ben Hannebrink company while he drives his roadster around town.

Grace and Mrs. Barnes were the guests of Jean Smith over the week end at Anaheim Landing. There were other guests from outside of town. The girls are reported to have had every minute occupied getting and giving addresses and telephone numbers.

Fred Marsteller hasn't had any time for vacations yet this summer. He has been working at the Inesco plant in Huntington Park and also at Sandy and Scott's.

Katherine McNeil knows how to take care of her nickels and dimes now. She has been relief girl at Woolworth's while the other clerks take a vacation.

Last Friday, downhearted students left the Gardena high school. It was the last day of summer school that caused so much gloom. It wouldn't have been so bad if two weeks of vacation hadn't come in between the closing of summer school and the opening of the regular session of school.

James and Bill Lanz returned recently from a trip to the east. They left with their parents a few days after school was out. They went as far as Pittsburgh and drove all the way. Jimmy said the scenery was beautiful but the weather was much too warm.

### Rural California Schools Gain As Cities Take Loss

Los Angeles County Shows Net Loss of Over \$76,000

SACRAMENTO, (UP)—Rural California will gain \$228,000 at the expense of cities during the coming fiscal year, due to a change in state apportionment for school purposes.

At the last legislature a bill was passed, granting increased state apportionment for rural school supervision. Because the total amount of state school funds available is fixed by law, cities must suffer a decrease in their state apportionments so that the rural districts may receive the increased amount provided by the new law. Los Angeles county shows a net loss of \$76,275 under the new system, according to Walter E. Morgan, head of the bureau of research and statistics in the state

**CONFIRM ASSESSMENT**  
Assessments for the improvement of 16th street, between Oxnard and Vermont avenues were confirmed by the Los Angeles city council this week, according to Councilman A. E. Hennings of the 16th District.

**ARE COMING HOME**  
Mr. and Mrs. Edward Clarkson are expected home in Torrance about August 28. Word received this week stated that the Torrance couple were sailing from Liverpool August 8 for Montreal.



**Boiling Water**  
♦♦♦ ROARING UP  
**Foaming Water**  
♦♦♦ ROARING DOWN

**Giant Geysers and Waterfalls of . . .**

## Yellowstone

**NATURE**  
—violent, gentle, freakish, picturesque, sublime—  
Nature in more widely varied moods than any place on earth, is unfolded to you on a trip through America's most widely known, widely visited preserve—Yellowstone National Park.

**SUMMER BARGAIN FARES EAST** make possible a tour through Yellowstone at surprisingly low cost. Special, PERSONALLY ESCORTED TOURS leave Los Angeles Aug. 30, Sept. 13. Call or write for booklets and full particulars.



## UNION PACIFIC

W. F. NASH, G. A.  
101 W. Seventh St.—San Pedro  
Telephone 1073

### SCHOOL DAYS

Just Around the Corner!

Special Regulation  
**School SKIRTS**

CLEANED AND PRESSED **50c**

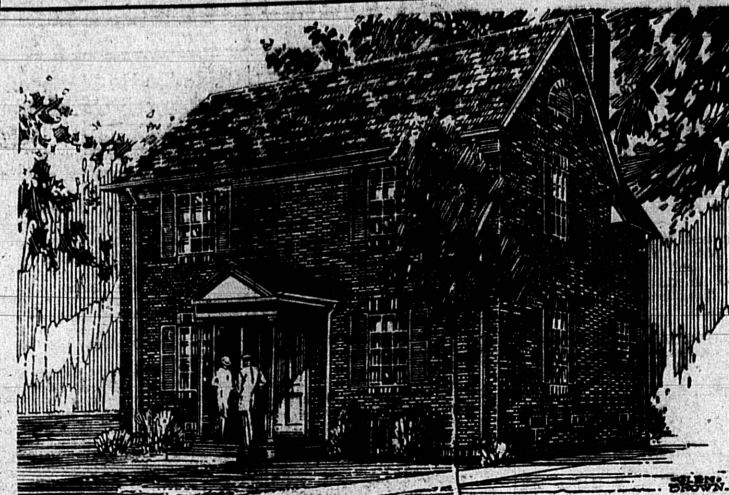
CASH AND CARRY

**Superior Cleaners**  
1344 POST AVENUE  
Torrance

Phone 370-J

## Home Makers Who Value Your Recognition of Worth

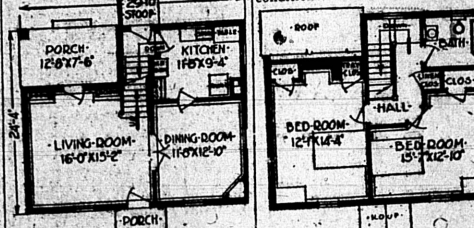
A Cozy Little Small Family Colonial



THE POCOHONTAS, DESIGN A507

COLONIAL types are always popular even in the smaller homes and many folk will have no other, all of which is fine for the owner who finds himself, for one reason or another, forced to sell his house. It is always well to consider this possibility when you are planning to build. The home of brick generally sells faster than the one of frame, and the resale value is higher. And the house that is practical, with rooms of a full ceiling height, not whittled down by encroaching sloping roofs, will always find more and readier favorable consideration.

Besides, the Colonial house is one of the most economical types to build. With only straight masonry to handle the bricklayer is always able to lay more brick than when he is required to lose time with intricate angles and to work around—undersized and oddly placed openings. Rectangular walls, with the ordinary doors and windows, offer the most direct path to economy. In designing this house the architect had in mind first economy and good appearance without, and second, but scarcely less, comfort and convenience. The floor plan is an open book to all. It tells its story quickly. There is a complete absence of waste space. There is unusual convenience in arrangement of the rooms. And there is good lighting throughout which makes for comfort under all conditions.



The Common Brick Manufacturers' Association, Cleveland, Ohio, can furnish complete drawings for this design. Leaflet on brick construction sent upon request.

**TUITION FEE HIKE**  
ANN ARBOR, (UP)—Students enrolling the University of Michigan this fall will have to pay \$5 more for enrollment fees. It was announced this week from the institution.

**PICKED WRONG HOUSE**  
CHICAGO, (UP)—Whoever left a neatly dressed, 6 week-old baby in a basket on the back porch of the home of Aldrich Greb a telephone lineman, picked the wrong house. Greb is a bachelor, and hastened to notify police of his discovery.

**SAVED BY COATTAIL**  
DETROIT, (UP)—Only his coat-tail saved Henry Tucker from suicide. As he was about to leap into the Detroit river a 15-year-old boy grabbed the end of his coat and yelled for assistance. Help came.

**Dick Meeuwig**  
1324 Sartori Ave.  
Phone 174  
90% to 100% Building Loans  
TORRANCE, CALIF.  
P. O. Box 504

**6% PAID ON YOUR SAVINGS!**  
Torrance Mutual Building and Loan Association  
Auditorium Building  
Torrance

**HOME SAFE!**  
You can make a bit which will "bring you home" safe financially, by adequately insuring your home in sound stock FIRE INSURANCE  
**L. B. Kelsey**  
1405 Marcelina Ave.  
Home Insurance is Not a Sideline  
Torrance Phone 153-14

**LUMBER**  
"Prompt Delivery If It Breaks Our Backs"  
**Mullin-Hayes Lumber Co.**  
1752 Border Ave. Phone Torrance 61

**SPECIAL**  
for July and August the **SUPREME HEATER**  
**\$5.00 down**  
No Interest No Carrying Charges 10 Months To Pay  
The Supreme has Safety Gas Control Full Floating Boiler and is Very Economical on Fuel  
**Torrance Plumbing Co.**  
1418 Marcelina Torrance, Calif. Phone Torrance 60

**HOME**  
Is Your Castle  
Let Torrance Firms Build Your "Castle"