

SAVE with SAFETY at your Rexall DRUG STORE



6 OUTSTANDING VALUES
of the
Rexall 27th Birthday Sale

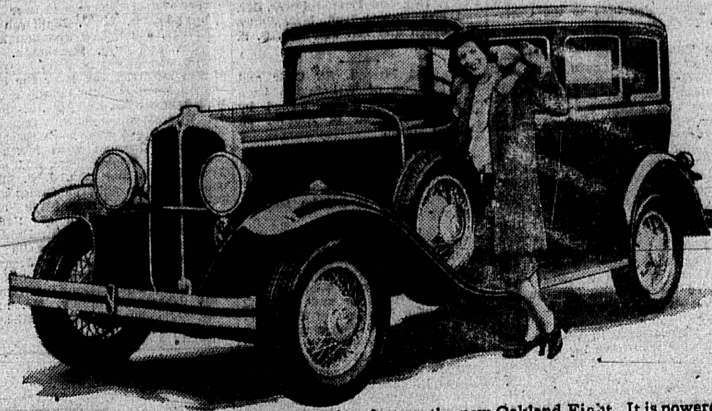
Puretest Rubbing Alcohol, full pint	49c
Gauzets	39c
Jonteel Face Powder	39c
Maxixe Cherries, 1 pound box	49c
Harmony Bay Rum, full pint	49c
Klenzo Shaving Cream	29c

DOLLEY DRUG CO.

EL PRADO at SARTORI

PHONE 10

Beauty, Speed and Power



New peaks of power, speed and acceleration feature the new Oakland Eight. It is powered with a sturdy, compact, 90-degree V-type eight-cylinder motor employing many new but thoroughly proved principles of design. Shown here is the New Oakland Eight 4-door sedan.

THAT CAR OF YOURS

With the increasing popularity of roadsters and sportster touring cars, many owners are damaging tops by lowering them while wet. This practice

is certain to cause mildew and rot.

On level ground, the well lubricated car on which the brakes are not sticking should be fairly easy to roll by hand. If it is not, lubrication, brakes and tire pressures might be checked to advantage.

A diminishing oil pressure when the car is hot does not always mean trouble. That the heat has dried the lubricant. It may be a sign of excessive looseness in the bearings. This is a condition which may show up on the oil gauge.

The difference between a quick starting and a slow starting motor is often the difference of a couple of thousandths of an inch in spark plugs. If you haven't had your spark plugs checked in the last 5,000 miles, you had better have it done. You will notice a difference in starting and pickup.

Why should crankcase oil be changed? Because it breaks down after continued use under tremendous heat and because it becomes dirt and grit-laden. The best way to emphasize these points is for the motorist to take a look at the thirty oil next time he has his crankcase drained. It is a graphic and important lesson.

Never pour water on a gasoline fire; gasoline will float on the water and spread the fire. It is better to use an extinguisher, or use sand or dust.

Horses, Not Motors, Now Alarm Residents

LOS ANGELES (UP)—Long dresses are not the only indication of the return to old times, according to City Prosecutor Lloyd S. Nix, who has been absorbed in the "horse problem."

"Not long since," he explained, "outraged citizens protested against the noise of automobiles. They liked the quiet ways of 'Old Darcy'."

"But now the tide is turning back again. Los Angeles men and women have taken up horseback riding."

And the complaints that have poured into the City Council led Nix to declare that Paul Revere's ride along the colonial countryside between Lexington and Concord didn't make half as much disturbance as the noisy riders galloping up and down San Fernando roads.

Among the complainants was Deputy Atty. Gen. James S. Howie. He said the noise kept the residents along these roads awake nights.

The city attorney has been called into the problem, with a view of drafting an ordinance which would silence "Old Darcy" for once and for all.



AN AUTOMOBILE CLIMBS A TREE

CONNEAUT, Ohio.—What happened when a light touch skidded on an icy road in Conneaut, Ohio, leaped 33 feet and finally came to rest suspended upside down from a tree at the side of the road. The driver crawled out after the freak accident with only a cut on his hand.

COUNTY GETS \$1,704,819.70 FOR HIGHWAYS

Forty Percent of State Fund Allotted to Los Angeles County

By HOMER L. ROBERTS (United Press Staff Correspondent)

SACRAMENTO, Calif., Feb. 6.—(UP)—Los Angeles county will receive \$1,704,819.70 as its share of the \$8,390,870 annual apportionment of motor vehicle license fees collected in 1929. It was announced here today.

This apportionment, the greatest in California's history, was based upon a total registration of 823,620 vehicles in the county, divided as follows: passenger cars, 776,677; solid trucks, 7,825; pneumatic trucks, 25,631; motorcycles, 3,130, and trailers, 10,357.

A gain of nearly \$600,000 in license tax collections was made over 1928, due largely to the astonishing increase for the year in registration of motor vehicles which, for the first time, exceeded the two-million mark, or 2,028,868 to be exact. This was an increase of percent or 187,436 vehicles over 1928.

Money collected from motorists for the license plates will be returned in the form of more and better roads, the division of motor vehicles points out. The total payments are split "fifty-fifty" between the state division of highways and the 58 counties of the state. The total amount allotted to counties was \$4,195,435.

The present apportionment is the first made under the new state law creating the California Highway Patrol, the cost of which is deducted from the total fees collected in the state.

Of the two million vehicles registered during the 12 months last year, 1,855,308 were passenger cars; solid trucks, 80,643; pneumatic trucks, 68,490; motorcycles, 9,623; and solid and pneumatic trailers, 42,899.

Los Angeles county had 40 percent of the motor vehicles in the entire state, and therefore drew down a total of \$1,704,819.70 to be spent on her highways. San Francisco was next with \$321,446, and Alameda county third with \$296,870.

LIVE LONG IN SNAKE BITE

WINDSOR, N. C., (UP)—One out of every 133 persons in Snake Bite Township, Bertie county, is over 80 years old. The population is 2,000. The only community in the village of Republican.

WOMAN, 45, LEADS CLASS
LAWTON, Okla. (UP)—Mrs. Mary Stimpert, 45, led the field of 22 honor roll students in the first semester at Cameron Agricultural school. She had a record of straight A's.

Low fares east



Atlanta, Ga.	\$61.91
Baltimore, Md.	80.04
Boston, Mass.	86.23
Buffalo, N. Y.	69.81
Chicago, Ill.	53.50
Cincinnati, O.	59.90
Cleveland, O.	63.78
Denver, Colo.	30.00
Des Moines, Ia.	45.10
Detroit, Mich.	62.31
Fort Worth, Tex.	40.00
Houston, Tex.	40.00
Indianapolis, Ind.	56.37
Kansas City, Mo.	40.00
Louisville, Ky.	57.64
Memphis, Tenn.	47.50
Milwaukee, Wis.	55.56
Minneapolis, Minn.	50.00
New Orleans, La.	47.50
New York, N. Y.	83.06
Omaha, Neb.	40.00
Philadelphia, Pa.	81.96
Pittsburgh, Pa.	69.56
St. Louis, Mo.	47.50
Washington, D. C.	80.04

and many other cities

Feb. 1st to Mar. 2nd

In Coaches and Reclining Chair Cars

Free Harvey dining rooms and lunch rooms are the best and lowest priced

Tickets may be bought now

Similar Fares Year-round March 1st to March 31st

SANTA FE TICKET OFFICE AND TRAVEL BUREAU

B. C. HIGGINSON, Agent

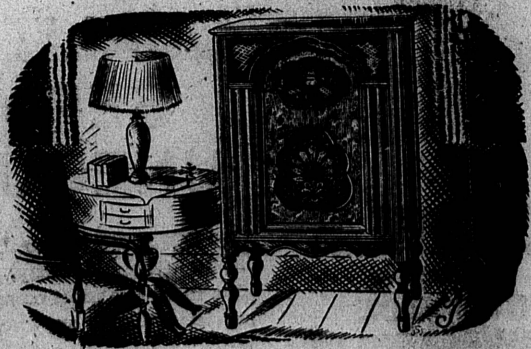
Torrance, Calif.

2354 Carson St. Phone 244

Do YOU KNOW

That the World's Finest Perfected Screen-Grid Radio... the Finest Radio Built... the Radio most people Buy... the Lowest Priced of all Good Radios— is

ATWATER KENT SCREEN - GRID RADIO



ADD the fact that Atwater Kent Screen-Grid radio is so far improved over the rest that it will still be a good radio 5 years from today...then, can you find a single reason on earth why you shouldn't own one?

No matter where you live. No matter what trouble you may have had with others. This radio will fill your every requirement. It is a radio you will be proud to have in your home.

All that we ask is the opportunity of demonstrating it to you—today!

"Always the First with the Best"
De Bra Radio Co.

"Every Customer a Friend"

Post Ave. at Cravens, Torrance

Phone 370-W

New yet sixteen years old! GENERAL MOTORS' lowest-priced eight



\$1045 AND UP superior performance

The development of the New Oakland Eight in reality goes back sixteen years. Several of the engineers responsible for its design participated in the production of General Motors' first eight, in 1914. Their extensive knowledge of eight-cylinder engines has resulted in a car of remarkably sound basic design, as well as one which has many advanced features. Its 85-horsepower engine develops one horsepower for every 37 pounds of car weight. This explains why few cars are as fast—why few, if any, can climb hills so quickly or accelerate so swiftly in traffic. Those who have driven it know how

well it merits the description, "the car with superior performance." The New Oakland's power plant is also exceptionally smooth. Its inherent eight-cylinder smoothness has been increased by a complete down-draft fuel system—new type cylinder heads insuring uniform combustion—laminated steel spring and rubber engine mountings. Considering its superior performance, exceptional smoothness and the beauty of its new Fisher bodies, the New Oakland Eight is very moderately priced. Thus many who have wanted to own a fine eight-cylinder automobile will find it a car of unusual appeal. Come in and drive it today.

PRODUCT OF GENERAL MOTORS

The New OAKLAND

The New Oakland Eight, \$1045 and up, f.o.b. Pontiac, Michigan, plus delivery charges. Lowley Hydraulic Shock Absorbers included in list prices. Bumpers, rear fender guards and spring covers extra. General Motors Time Payment Plan available at minimum rate.

Consider the delivered price as well as the list price when comparing automobile values. Delivered price includes only authorized charges for freight and delivery and the charge for any additional accessories of financing desired.

Industrial City Motors

1912 Carson Street

Phone 648

Torrance