

CLOSING OUT

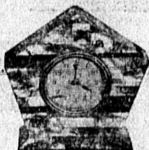
A Few Lines Of

Abalone Pearl Gift Specialties

AT DISCOUNTS UP TO

75%

Below Regular Retail Prices



Abalone Pearl Inlaid Clocks



Lamp Standard

Candleholders, Salt and Pepper Shakers, and other beautiful and useful art pieces WHICH MAKE IDEAL

Christmas Gifts



Salad Sets

SALM Manufacturing Company

Factory Salesroom: 1808 Artisans Ave. TORRANCE, CALIF.

THAT CAR OF YOURS

Worn pistons and bushings are a frequent cause of "knocks"

After a new oil pump has been installed on your car it is necessary to prime the pump. Remove the connection to the pressure indicator and squirt the contents of an oiling can into the pump.

Coating the rims with alum-

inum paint prevents rust. Scales of rust act like sandpaper on the inner tube and result in premature blowouts.

Spare tires should be cleaned before storing. They should be deflated, then wrapped in paper or cloth in a cool, dry place away from heat and sunlight.

Back lash in universal joints frequently causes the slipping of pins and pinion gears. Inexpensive replacement of bushings will usually remove the back lash.

Keep your tools where they belong, neatly packed in a kit. If you put small tools in the

pocket of the car, they not only are hard to find, but have a tendency to wear through the pocket.

If you are the one being towed it is a good practice to keep your foot lightly on the brake all the while. In this way you will be ready for an emergency and can keep the rope taut.

The spare tire pressure should be tested regularly as well as the ones you are using. Slow punctures and leaky valves sometimes let the air out and the spare tire will fail you when you have the greatest need for it.

HI SCHOOL HI LIGHTS

By MURIEL BELL

Stanley Creighton represented Torrance high last Friday night in the ex-temporaneous contest at L. A. Polytechnic high school, in place of John Young. Although he didn't place, Stanley deserves a great deal of credit for going and doing his best for the school.

The Girl Scouts were invited by the Kiwanis club to give part of their Scout ceremony and sing some of their songs. The girls who went are Jean Smith, Francis Granger, Mildred Holland, "Babe" Cummings, Merice Bay, Edith Corbet, and the two Scout mistresses Miss K. Millard and Mrs. R. Smith.

In an and call last week all of the basketball players were presented to the student body and the captains of each team gave a short talk. Bartley Carr, captain of the varsity team is a bashful little boy so he didn't come to school. A poor little senior had to give a talk which could have been worse.

The Los Angeles stock yards had some visitors Saturday. Edgar Reeve, Bert Merrill, Al Mintun, members of the stock judging team and Virginia Brown, Evangeline Cummings of the dairy cattle team were the visitors. The girls team

won second high place and Jane Roberts won second place as an individual. To get their minds on a different subject they went to a banquet in the evening.

Fern Stevens and Kathryn Quigley were seen wandering about the school again last week. These two girls don't seem to have gotten enough of school in the four years they attended.

A skating party was given at the rollerdom last week in honor of Lela Fuller. Those who spent the evening of falls and fun are Virginia Brown, Elen Stanley, "Babe" Cummings, Jane Roberts, Hartley Cook, George Lancaster, Pete Zamperini, Howard Gilliam and the chaperone, Mrs. Brown.

Vivien Eaton (Daugherty) has returned home from the California Lutheran Hospital after a serious operation two weeks ago. She is improving rapidly now, and can have visitors. She is staying at her mother's home on 917 Cota avenue.



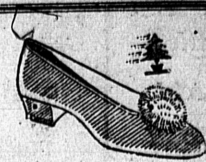
WILL 'WRECKS' BE RULED OFF HIGHWAYS?

Will antiquated, mechanically faulty automobiles be ruled off the highways by law?

This is one of the questions that is being considered by the motoring public following the report reaching the Automobile Club of Southern California that approximately one-half of all the accidents occurring on the heavily trafficked highways leading to the great football stadiums of the country were traced to poorly maintained automobiles. The report states that not only nearly half of the accidents are traceable to ancient wrecks of machines, but nearly all of the delays, which are numerous, are occasioned by antiquated machines with neglected motors, defective brakes, or broken steering apparatus.

In several instances, the movement of a line of cars a mile in length was delayed because some improperly maintained auto was unable to climb a medium grade, or had broken down completely.

The college boy with his overloaded, dilapidated wreck of a car is named as the principal offender in lines of football traffic.



Slippers--

SPECIALLY FEATURED

What could be more appropriate than a comfortable pair of bedroom or lounging slippers. We are showing quite a number of new styles this year.

"KOZY KOMFORT" Satin Boudoir Slippers in black and old rose, the pair \$2.75

Other Styles Priced \$1.85 to \$5.00

SEE THEM IN OUR WINDOWS

SINCE 1913

RAPPAPORT'S

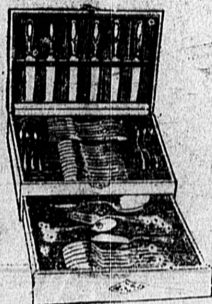
CABRILLO

IT PAYS TO PAY CASH

1215-17 EL PRADO

PAXMAN'S CASH STORE

HARDWARE HOUSEHOLD GIFTS TORRANCE, CALIF.



GENUINE 1847 Rogers Silverplate

29-Piece Anniversary Chest

\$36.25

Ambassador Pattern, 50-year guarantee. Heavy plated, 29 beautiful pieces of silverware, complete with an elegant silk-lined chest—for \$36.25. A wonderful Christmas Gift.

Carving Sets \$7.50 to \$12.75

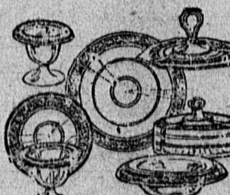
Paxman's carry a full line of GENUINE RUSSELL CUTLERY

Richly Tinted Crystal Ware

And Fostoria Ware Also a very big assortment of Glasses and Stemware

Really, we never began to carry the line we have this Christmas. Rich shades of pink, emerald, and peach—some with soft velvet finishes; others delicately etched.

All shapes and styles of Glasses, Water, Wine, Sherbet and Highball.



HIS Favorite SPORT HIS Favored GIFT

Of all the things you can get for him, be he man or boy, there is bound to be one that will meet his approval above all else. And as we know men-folks, the chances are you'll find that gift in sports equipment. Whatever HIS game is, you can make it more enjoyable for him by choosing from this great display.



Electrical Goods 25% to 50% OFF

Paxman's are discounting their entire line of high grade electrical appliances. They are standard, well-known brands, offered at BIG REDUCTIONS running as high as HALF OFF. Here are a few typical examples:

- HOTPOINT Toaster Stoves..... \$3.50
- Manning Bowman TOASTERS..... 5.00
- HOTPOINT "Flip-Flop" Toasters.. 3.90
- HOTPOINT Pancake Griddle.....12.00
- ELECTRIC IRONS, as low as..... 1.00
- Armstrong TOASTER STOVES... 4.50
- EDISON Toasters..... 3.50

GOOD

Brooms

49^c

Red or Green Enamel. This Price For SATURDAY ONLY

PAY CASH AND POCKET THE DIFFERENCE PAXMAN'S SELLS FOR LESS

TORRANCE PHARMACY

WHO IS IT MA - SANTA CLAUS?

NOT EXACTLY! IT'S YOUR FATHER HE SAYS WE CAN PICK OUT OUR OWN CHRISTMAS PRESENTS

HE SAYS TO MEET HIM AT TORRANCE PHARMACY - LET'S HURRY!

FREE!

FOOTBALL TICKETS Two \$5.00 SEATS

OF

U. S. C. vs. Pittsburgh

ROSE BOWL—NEW YEAR'S DAY

Ask for tickets—one with each 25c purchase will be given from now 'til Christmas.

"PRIZE AWARD CHRISTMAS MORN!"

SHOP HERE FOR GIFTS

CANDY

PERFUME

TOILET SETS

PIPES

CIGARS

BILFOLDS

LIGHTERS

SHAVING SETS

COMB & BRUSH SETS

COMPACTS

CAMERAS

ATOMIZERS

Suggestions

Bridge Sets

Tea Sets

Stationery

Flashlights

Ash Trays

Conklin Pens

Conklin Pencils

Tobacco Pouches

Pocket Combs

Traveling Sets

Foilet Waters

Bath Crystals

Torrance Pharmacy

CARSON and CABRILLO

Geo. L. Probert, Prop.

Phone 3-J