

Of Interest To Motorists

New Dodge Brothers Six Soon to Be Displayed in Torrance Shows Influence of Chrysler

A new car, representing progressive principles of engineering design coupled with the ruggedness and dependability that characterize Dodge Brothers products, is offered in the Dodge Brothers Six introduced to the nation simultaneously with the New York automobile show. Eight body types in unique attractive color combinations, and featuring many refinements in mechanical detail, comfort and appearance are offered.

The cars are a striking answer as to how Walter P. Chrysler intends to increase Dodge Brothers prestige for they incorporate features at a price that only the uniting of such tremendous facilities could produce. Body types available include the 5-passenger phaeton, roadster with rumble seat, 5-passenger sedan, 5-passenger de luxe sedan, 5-passenger brougham, 4-passenger Victoria, 2-passenger business coupe and de luxe coupe with rumble seat. Prices are to be announced when the car is first displayed and production is under way on a record breaking scale to insure prompt deliveries.

"It was our aim to add so conspicuously to the present acclaim of the Dodge name that every Dodge owner will feel even greater pride in these latest creations," said Mr. Chrysler, in connection with the new car announcement. "We ask only that the public examine and test the car in every way from the standpoint of beauty, originality, luxury and performance."

Mono-Piece Body Construction
From the radiator emblem, the Dodge Brothers original interlaced triangles with wings added, to the clean cut enameled housing that conceals the gasoline tank, there is a touch of artistic finality about the car. A distinctive feature of the new design is the Mono-piece body construction. Sweeping graceful lines are accentuated by the modern narrow radiator profile, and the molding that encircles the body and tapers across the cowl and along the center hood hinge.

The Mono-piece body construction, an exclusive feature of all models, according to Len Murray, manager of the Allen H. Paull agency, provides rigidity and balance which only this design can give. The body is so mounted on the chassis that the passenger load rides close to the ground. Side-sway is eliminated and safety is promoted, yet the interiors have been enlarged to afford maximum vision and room for every passenger. All possible body joints in the Mono-piece body have been eliminated. Felt insulation between the body and frame is further protection against vibration. Grueling road tests have proven the bodies as tight and firm after long usage as when new.

Luxurious Interior Appointments
All doors are unusually wide, permitting easy entrance or exit. Adjustable rubber buffers are built in the door sills to insure quiet closing to prevent squeaks or rattles.

Inside coach work gives the impression of custom built design, with mohair upholstery in blue or tan shades trimmed in broadface. Butler silver finished interior fittings are in ornamental leaf pattern, executed into harmonious designs so that door handles, dome lights and other interior hardware conform with the nicety of fine jewelry.

Convenience and completeness are featured on the attractively arranged controls in the driver's compartment. Grouped in a panel indirectly illuminated are speedometer, ammeter, oil gauge and fuel gauge. In the same panel, symmetrically arranged, are the start-

ing button, carburetor choke, manifold heat control, spark control and approved theft lock ignition switch.

Machined Combustion Chambers
Cylinders are cast in block with the upper half of the crankcase, the cylinder head being detachable. Combustion chambers are completely machined, giving uniformity of compression in all cylinders, a factor in smooth operation. Exhaustive tests have proven the engine capable of easily developing 60 or 65 miles an hour with reserve power available for higher speeds. An improved carburetor and ignition system have been adopted. Engine accessories of the latest type in-

clude oil filter, gasoline filter and air cleaner. The engine oiling system is by gear type pump with full force feed lubrication.

Chrysler hydraulic weather-proof four wheel brakes, expanding in 12 inch brake drum, provide a total braking area of 161.9 square inches, affording positive control of the car at all times. The hand brake, of the contracting band type, is mounted at the rear of the transmission.

A new type transmission featured by unusually wide faced gears, and a sturdy rear axle with double thrust-absorbing roller bearings, are Chrysler developments that add materially to the performance.

New style wheels with elliptical spokes and large attractive mesh-room hub caps give greater strength and beauty. Balloon tires are generously oversized (29x5.50) and provide maximum riding comfort. Four Lovejoy hydraulic shock absorbers are standard equipment. The total spring length is 91 inches,

every leaf being of heat treated chrome vanadium steel.

Water for the cooling system is circulated by centrifugal pump, an automatic thermostat preventing circulation around the cylinders until the proper operating temperature is reached. Cellular radiator construction provides maximum area for cooling.

Unusual ruggedness is found in the frame, having five cross members, in addition to the front and rear engine supports.

Plan to Export Gas Into Orient

WILMINGTON. — Establishment of a new industry at Wilmington Harbor in the refining of high-test or "casting-head" gasoline, and export of the product to Europe and the Orient, was forecast yesterday when the Natural Gas Company of America made request to the Board of Harbor Commissioners for loading terminal facilities at Berth 128, in the West Basin.

Chuckle a bit and forget your worry. Read the Comics on the back page and the first page of the second section each week.

Our Want Ads Bring Results

All that is newest... in Style and Performance — plus the reliability that makes Buick Supreme.

COUPES . . . \$1195 to \$1875
SEDANS . . . \$1220 to \$2145
SPORT CARS . \$1225 to \$1550

These prices f. o. b. Buick Factory. Con-
venient terms can be arranged on the
liberal G. M. A. C. Time Payment Plan.

The New
BUICK
R. S. Flaherty
BUICK SALES AND SERVICE

1316 Cabrillo Ave., Torrance Phone 65
When Better Automobiles Are Built . . . Buick Will Build Them



Don't buy tires on prices alone

Low price doesn't necessarily mean a bargain. The most expensive tire you can buy is the low-priced one that expires at the end of a couple of thousand miles.

But some low-priced casings are just as good, in proportion to their cost, as more expensive tires. Buckeye tires, built and guaranteed by Kelly-Springfield, are good reliable tires that will give honest service. It is not possible to build and sell satisfactory tires for less money than we ask for a Buckeye. If it were possible, we'd sell them.

If you're looking for real value in a moderate-priced tire, come in and see us.

Mullin & Son

Redondo Blvd. at Western Ave. Torrance
Phone 320-J

represents 4 years of Development and over a Million miles of Testing

Years ago, the Chevrolet Motor Company designed and built its first experimental six-cylinder motor. This far-sighted step was taken because Chevrolet engineers knew that the six-cylinder motor is inherently the most perfectly balanced motor—the ideal power plant to meet the growing public demand for greater reserve power, faster get-away and, above all—smooth, quiet performance.

During the last four years, over a hundred six-cylinder motors were built by Chevrolet engineers and tested on the General Motors Proving Ground.

Day and night, through winter's cold and summer's heat, the incessant testing went on—until the present motor was developed and finally pronounced correct.

At the same time other Chevrolet engineers were perfecting other parts of the chassis. And another great automotive organization—the Fisher Body Corporation—was devoting its gigantic resources to the creation of the finest, sturdiest and most beautiful bodies ever offered on a low-priced automobile.

As a result, the Outstanding Chevrolet offers an

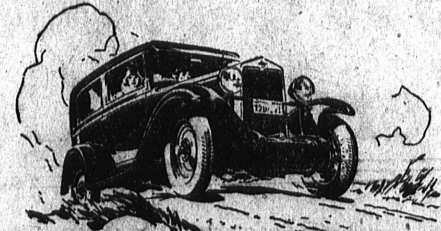
order of well-balanced excellence—a combination of performance, comfort, beauty and handling ease that is truly remarkable—with a fuel-economy of better than 20 miles to the gallon of gasoline.

You owe it to yourself to see and inspect this remarkable car. Come in today!

The COACH \$595

The Roadster	\$525
The Phaeton	\$525
The Coupe	\$595
The Sedan	\$675
The Sport Cabriolet	\$695
The Convertible Landau	\$725
Sedan Delivery	\$595
Light Delivery	\$400
1 1/2 Ton Chassis	\$545
1 1/2 Ton Chassis with Cab	\$650

All prices f. o. b. Flint, Michigan



TORRANCE MOTOR CO.

Marcelina at Cravens, Torrance Phone 127

HARRY C. CLARK W. A. KING
16317 S. Vermont Ave., Gardena, Calif. 2748 Redondo-Wilmington Blvd., Lomita
QUALITY AT LOW COST



13-PLATE BATTERY

AN ENTIRELY NEW STANDARD OF BATTERY VALUE

\$8.50

QUICK STARTING! RELIABLE PERFORMANCE!

BACKED BY A REAL GUARANTEE

LONG LIFE

DEPENDABLE SERVICE THE YEAR ROUND

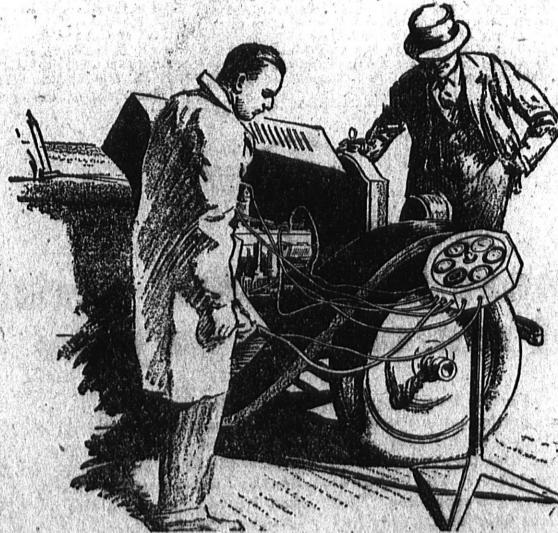
[ALLOWANCE MADE ON YOUR OLD BATTERY]

Schultz, Peckham & Schultz

Authorized Dealers Ford Products

1514 Cabrillo, Torrance

Phone 137



TUNE-UP Including

1. Adjust ignition, check timing.
2. Clean and adjust contact points.
3. Check valves for sticking or burnt condition.
4. Test ignition coil under compression.
5. Adjust generating charging rate.
6. Test each individual cylinder for compression and rings.
7. Clean motor and generator commutator.
8. Check all wiring for open and short circuits.
9. Clean and adjust spark plugs.
10. Check carburetor.
11. Test ammeter and ignition switch.
12. Fill battery and clean terminal.

RELIABLE!

DEPENDABLE!

IF YOU want reliable, efficient Garage Service, rendered in a prompt, courteous manner, then park your car in the garage of Mullin & Son. Expert mechanical service and thorough attention given to your desires.

Official Headlight Adjusting Station No. 223

Mullin & Son

REDONDO BLVD. AT WESTERN AVE.

Phone 320-J

Torrance

Official Headlight Adjusting Station No. 223