

### Gas Refrigerator

Noiseless

Gas Refrigerators give perfect service without noise

Cost of operation is low, and by the saving of food a gas refrigerator will more than pay for itself.

Sizes for every home  
Convenient terms

All cooking and heating appliances sold by the Southern California Gas Company are approved by the American Gas Association Testing Laboratory.



**Southern California Gas Company**



Cravens and Post Avenues, Torrance

### VOGUE WOMEN'S FASHIONS

Exclusive to This Paper—Copyright 1928 by Vogue



CLARIBEL TALKS ABOUT COATS

Dearest Eve:—  
Are coats all full length in Paris now? They are in New York if you except the short suit coats that are so good in tweed. I've sketched three long ones that I saw the other day at one of the openings. The coat shown at the left was of brown velour with a very interesting new sleeve and a fur collar cleverly added so that the cloth collar showed inside. By the way,

with the exception of fox, people seem to be favoring the flat fur more and more. It takes an unusually clever hand to manage a fluffy fur without making it look bulky—don't you agree?  
Personally I was quite enthusiastic about the second coat. It was in brown, too—brocade, this time—but it had the new black-and-brown effect on account of its caracul fur. There was a deep V-shaped section in the back that

would make anybody look slenderer, and I liked the way the collar stood up and away from the neck.  
The last coat had one of those new long shawl collars that are so good. A belt was suggested with four rows of tailored stitching, and the way those rows went down at the side would reduce one's apparent girth quite marvellously.  
Yours as ever,  
Claribel.



THIS IS A VELVET SEASON

Velvet is the star of the new fabric play—be sure about that. Not the old-fashioned silk velvet, but the new velvet with the soft, high lustre given to it by the artificial silk fibre used in its construction and the marvellous drapery quality that it gets by reason of its thinness, its suppleness.  
Every woman needs a velvet afternoon dress, this year—plain, or printed, or of cut velvet. And the sketch shows the sort of model she should think of in making it up. The graceful femininity of it, the interesting movement are essential. The swathed hip-line is smart. Tie out in one with the right side of the blouse and circling the neck in back is an individual touch.

#### Eno Had Display at Mines Field

Eno Rubber Company, whose plant at Torrance is devoted to the turning out of all manner of rubber novelties, had a neat display of its oSo-Soft product at the National Air Exposition at Mines Field. Flanked by monster planes and airplane equipment of all sorts, the Eno contributes its part in adding to the comfortable furnishings of passenger aircraft.

#### BEG YOUR PARDON

Through a typographical error in last week's issue, it was announced that Charles Tansley had been selected warden of the Knights of Columbus. It should have read Charles Tansley.

#### Dodge Announces New Senior Six

Models Represent New Era in Motor Car Design and Performance

Style in motor car design that reflects tomorrow's fashion is represented in the New Senior Six models announced by Dodge Brothers Corporation in six body types to be on display September 22 in the showroom of Allen H. Paul, Torrance dealer. Body lines and interior appointments have been harmonized in a new style creation in which engineers directed all effort to find the best in appearance and performance that could be built into a motor car.  
Exceptional riding comfort made possible by the fact that springs extend nearly 80 percent of the car's wheelbase longer and roomier bodies together with ruggedness and dependability which have gained Dodge Brothers products a world-wide reputation are featured in the car. Its smart style, emphasized by every curve of headlamps, radiator, sun visor and fenders, makes it a car of distinctive personality, offered after months of refining a proven plan. The prices range from \$1,575 to \$1,845, f. o. b. the factory.

Driven by a powerful six-cylinder "L" head motor, exhaustive tests have proven the New Senior Six with lightning acceleration to high speeds, and capable of economically sustaining those speeds for hours with the minimum of vibration and driving effort. New standards of performance are claimed in its operation. Controlling this speed and power are Lockheed hydraulic internal expanding four-wheel brakes, operated by the slightest touch of the foot pedal. The hand brake operates on the propeller shaft, and the lever is located at the left of the driver.  
Exterior hardware of the New Senior including radiator shell, headlamps, bumpers, hub caps, door handles, cowl lamps and moulding, and spare tire brackets are chrome plated, attractively setting off the body lacquers and color combinations.

With the introduction of the New Senior Six, and announcement of improvement in the body lines of the Standard and Victory Sixes, Dodge Brothers offers three complete lines of sixes covering a price range from \$975 to \$1,545.  
In the announcement of the Standard Six last March, the company completed its transition from the four to six cylinder field in less than a year after the Senior, the first Dodge Brothers six was announced. Such enthusiastic public reception and approval met the first Dodge six, that last January the company announced the Victory Six to the nation by a coast to coast radio hookup. Less than three months later, a similar announcement introduced the Standard Six, and marked the passing of the four cylinder cars.  
Manufacturing schedules of the three lines of sixes has steadily been increased to meet the demand for the company's cars until August set a new record of approximately 27,000 units of passenger and commercial vehicles.

Allen H. Paul left last week for a hunting trip near the ridge route.  
Guaranteed paint, \$2.95 gallon. Consolidated Lumber Co., Torrance, adv.

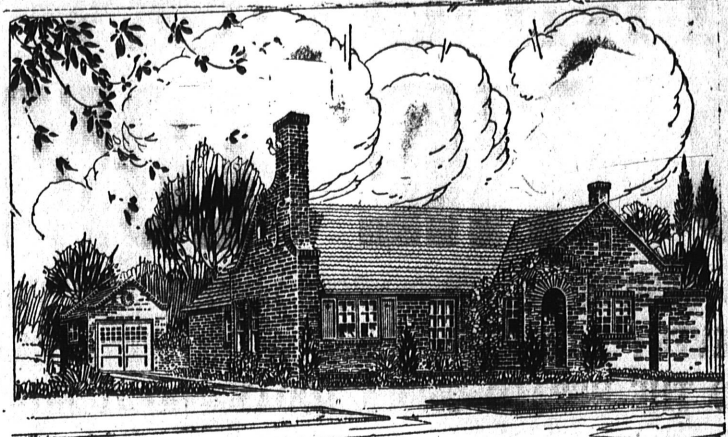
#### 25 Year Record Broken by Buick

Setting two new records since the announcement of the Silver Anniversary Buick on July 25, the Buick Motor Company last week announced the shipment of 45,315 of the new models prior to August 31 and ordered a production schedule of 1,330 cars daily during the month of September.  
This enormous increase in production—the greatest in the history of the company's twenty-five years of motor car manufacture—has been made necessary by the nation-wide demand for the new model, according to C. W. Churchill, general sales manager.

September 30th final sale date for reduced round trip fares to Eastern points Start any day this month—return limit Oct. 31st  
• The Grand Canyon National Park is at its best and the Pullmans take you to the rim and wait for you.  
• The Indian-detour will be at the height of attraction and comfort.  
Santa Fe Ticket Office and Travel Bureau  
B. C. HIGGINSON, Agent  
2354 Carson Street  
PHONE 244

## BUILD AND LIVE IN TORRANCE

### A California Bungalow of Unusual Appeal



Bungalows of the so-called California type are almost always attractive. They carry an indefinable atmosphere of the Spanish architecture even when the native designers make no special effort to provide it. This bungalow is one of that sort. It hasn't the flat, sprawling roof that usually identifies the type, but the arched doorway to the entrance porch and the rough textured walls instantly bring into the mind's eye those old missions that are about all that is left in Southern California of the handwork of the Spanish masons of nearly three hundred years ago.

And when you glance at the floor plan it is emphasized all the more. Here is the inescapable zig-zag layout with the patio in the rear and the adjacent broad, covered living porch that becomes a spot of endless delight in the summer evenings when flowers are at their best and the play of the fountain tulls one into ecstatic drowsiness. For the patio, to fulfill its mission, should have both the fountain and the flowers, the latter in great variety.  
Like all real California bungalows, this one has no basement and likewise lacks a heating system. It is peculiarly a warm climate home, and if built in the north must be provided with a heating plant. The fireplace nook off the living room is the one spot that may be comfortable in case of an unusual cold snap.

The interior arrangement is most convenient and living and dining room can be made virtually one room when so desired. While the kitchen may seem oddly placed at first glance, the more you study the plan the more it appeals. The bedroom and bath arrangement complete a very comfortable home for a small family, one that is easily within the reach of the average man.

The Common Brick Manufacturers' Association, Cleveland, Ohio, can furnish complete drawings for this design. Leaflet on brick construction sent upon request.

PHONE 38  
**Torrance Brick Company**  
Tapestry Shirvan Face Select Common Common  
Manufacturers of Wire Cut Brick  
Plaza Del Amo and Border Avenue  
"Everlasting Materials"

**TORRANCE HERALD PHONE 444**

**Torrance Wallpaper and Paint Co.**  
1420 Marcellina Ave. Torrance, Calif.  
Phone 71-R Res. 120-W  
E. N. Tomkins, Prop.  
Painting, Tinting, Decorating and Paperhanging Estimates Furnished

**P. O. GUY BUILDING CO.**  
Contractors and Builders  
We finance your building Residence  
1023 Amapola Phone 181-J  
Office 1320 Sartori Ave. Phone 177

**TORRANCE SASH & DOOR**  
1641 Borden, cor. Carson PHONE 546-W  
Screens Glass Mirrors  
Cut and Made to Order Circle Work a Specialty

**COMPLETE HOUSE FIXTURES**  
Fully Guaranteed SPECIAL \$98  
Consists of 6 Pieces:  
1. Hot Water Heater  
2. Laundry Tub  
3. Kitchen Sink  
4. Bath Tub  
5. Toilet  
6. Lavatory  
The Complete Set—for \$98  
When you consider that these are GUARANTEED Fixtures, this SPECIAL PRICE is Remarkable.  
**TORRANCE PLUMBING CO.**  
F. L. PARKS, Prop.  
1718 Marcellina, Opposite Postoffice Phone 60-W

**Plumbing**  
It will pay you to get our prices on any job.  
**PEMBERTHY and ANDERSON**  
1877 Carson St. Off Cabrillo Phone 81-J

**Dick Meeuwig**  
1324 Sartori Ave. Phone 174  
30% to 100% Building Loans  
TORRANCE, CALIF.  
P. O. Box 504

**W. L. REEVE GENERAL CONTRACTOR**  
New and Repair Work  
2108 Gramercy Phone 54-R

**Our Want Ads. Bring Results**

**CONCRETA**  
Beautifies and Protects STUCCO.  
CONCRETA is a special lime-resistant paint for stucco. Its soft, pleasing texture adds to the beauty of the natural surface. At the same time, it forms a film of protection against lingering dampness, changing temperatures and carbonic acid from the air—destructive forces which cause gradual disintegration of unpainted stucco.  
CONCRETA is supplied in twelve suitable colors, and white. Your Fuller Dealer, listed below, will gladly give you a color card. Write for special booklet on CONCRETA.

W. P. FULLER & CO., 125 E. Third St., LONG BEACH  
41 Branches in 25 Pacific Coast and Inland Mountain Cities. Factories in San Francisco, Los Angeles, Portland. Distributors of Valpar Products.

**CONCRETA**  
Torrance Wallpaper & Paint Co.

**FULLER**  
PAINTS, OILS, GLASS, ENAMELS, VARNISHES, PUTTY, PAINTERS' SUPPLIES

Try Our Want Ads For Results

AGENTS FOR—  
Pickwick Stages  
California Transit Co.  
Pioneer Stages  
Motor Transit Co.  
Catalina Island Trips  
Red Feather Stages  
Los Angeles Steamship Co.

**SUNSET STAGES**  
Time Table Effective July 1, 1928  
STAGES LEAVE TORRANCE

For Wilmington and Long Beach	For San Pedro Lomita South	For Redondo Beach	For Hermosa Beach, Manhattan Beach, El Segundo Venice Ocean Park Santa Monica
8:54 A.M.	8:54	6:20 A.M.	
9:49	9:49	7:15	
9:24	9:24	7:45	
9:54	9:54	8:15	
10:29	10:29	8:47	8:47 A.M.
11:24	11:24	9:40	10:59
12:24 P.M.	12:24 P.M.	10:50	12:30 P.M.
1:24	1:24	11:30	2:30
2:24	2:24	12:30 P.M.	4:30
3:14	3:14	1:30	6:30
4:34	4:34	2:30	8:55
5:24	5:24	3:30	
6:24	6:24	4:35	
7:24	7:24	5:35	
8:29	8:29	6:30	
9:44	9:44	7:40	
11:29	11:29	8:55	
		9:55	
		11:59	

\*Daily except Sundays & Holidays  
†Sundays only  
‡Connects for Catalina Island  
§To Lomita only except Sunday

Motor Coach Company  
Phone Lomita 58  
Special rates for charter trips