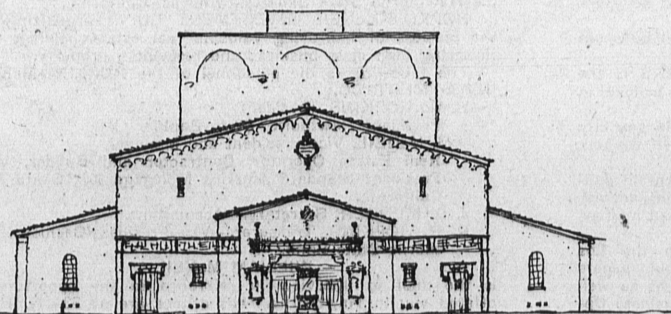
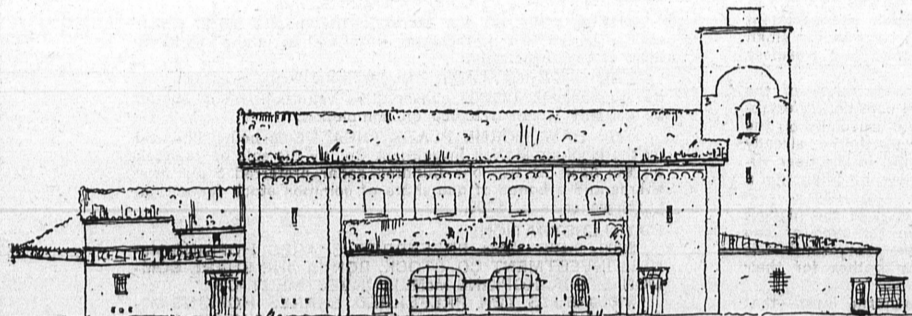
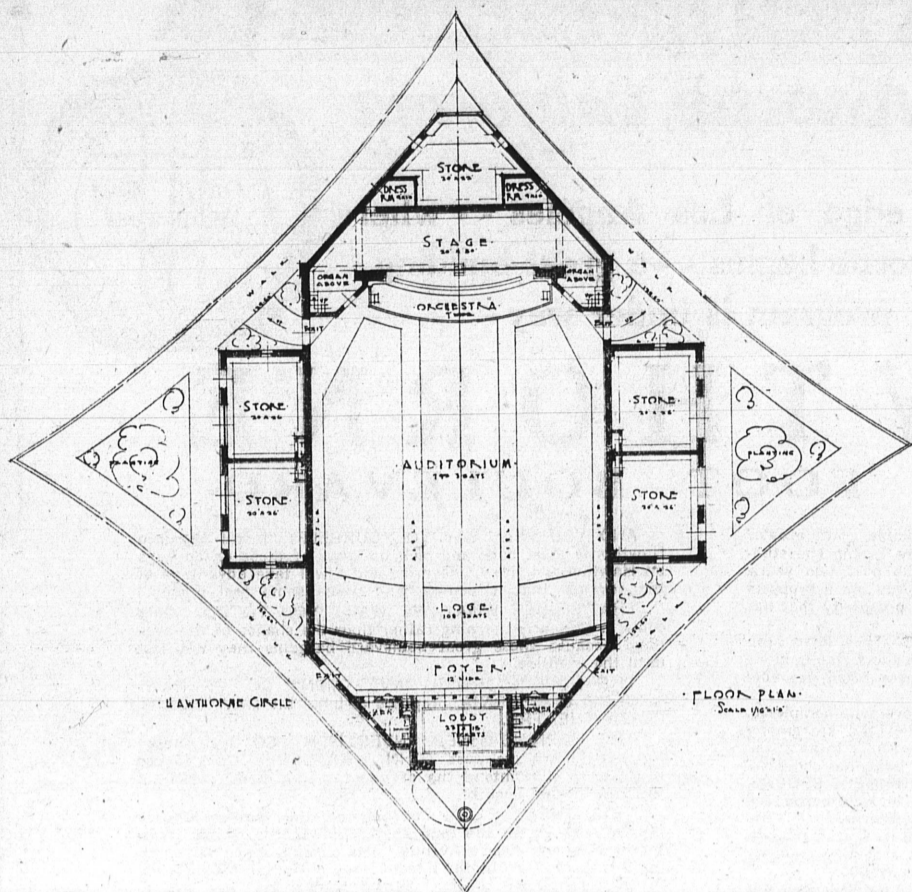


### Hopkins-McNeil Investment Company Will Erect \$150,000 Theatre in Hawthorne as Part of Big Progress Program



### Nash Prices Are Greatly Reduced; Quality Is Same

The Nash Motors Company has announced price reductions ranging up to \$300 on the Advanced Six and Special Six lines. The new low prices are effective Nov. 1. No change has been made in the Nash models themselves, and the character and quality of the cars remain exactly as before. This sweeping Nash cut in prices is, in effect, a double reduction, according to E. H. McCarty, general sales manager of the Nash Motors Company.

"When the new Nash models were nationally introduced July 23," says Mr. McCarty, "they presented new and original body designs, far-reaching improvements in construction, and many refinements in engineering and equipment, all of which entailed large increases in manufacturing cost. If Nash sales and production had not been smashing all records for volume at that time, we would certainly have been compelled to increase prices materially. But Nash prices were held at the same figure, and the response on the part of the public to this offering of greater value and greater quality was instantaneous and country-wide. In the three-month period since national Nash inaugural day, July 23, when these new cars were first placed on display, sales have more than equaled one-half the sales for the entire year of 1924, which was a banner year for Nash. So that it is now possible for us to make these sweeping reductions on the Advanced Six and Special Six lines and thus pass on the earned benefits of record-breaking production to buyers.

"There has been no cheapening of materials, construction or manufacturing. The same high standards of quality and workmanship that have earned a world-wide reputation for C. W. Nash as a builder of high-grade cars are strictly maintained."

#### NOTICE OF STOCKHOLDERS' MEETING

Notice is hereby given that the annual Meeting of Stockholders of the Standard Machine Company, a Corporation, will be held at the Office of the Company at 1301 Sartori Avenue, in the City of Torrance, County of Los Angeles, State of California, on the 14th day of November, 1925, at the hour of Two o'clock P. M. on said day, at which time and place Directors of said Corporation will be elected for the ensuing year, and all and any other business will be transacted which may lawfully and properly come before such meeting.

Witness the hand and seal of Secretary of said Corporation.  
(Seal) ERNST KOPFL.  
Dated this 28th day of October, 1925.

Pineapple and Marshmallow Dessert.—Dice one can of pineapple, add about one-half pound of marshmallows cut in quarters. Cover with cream and let stand in very cold place all day.

**RED W BRAND**  
Varnish Stains  
"HARDWARE"  
REEVE  
Torrance

## Dodge Brothers Motor Cars

The lasting quality of Dodge Brothers Motor Cars has made possible

New Low Terms

**\$195 DOWN**

Balance 24 Equal Monthly Payments

Your used car will be accepted as down payment, provided its value equals the amount required.

Place your order at once to insure early delivery.

### Allen H. Paull

Phone 952  
16514 S. Vermont Ave.  
Gardena

Phone 1382  
232 S. Pacific Ave.  
Redondo Beach

### Instant Heat

You will soon desire heat for a single room or rooms when the chilly evenings arrive. Radiant gas heaters will give you the heat you desire with all the promptness of magic.

We will sell you a heater on monthly payments.



### Southern California Gas Company

Post and Cravens Aves.  
Torrance  
Term Payments Phone 231

## You Send Your Children To School

Are You Schooling Them In Economy?

THIS BANK IS A SCHOOL OF THRIFT

YOUR boy or girl can have a bank account here. ONE DOLLAR will open it up for them.

BOOK KNOWLEDGE is important—we could hardly get along without it.

BUT DOLLAR KNOWLEDGE is important also. Observe the many who have never saved, how are they getting along.

Let's get your children's bank accounts under way.

## First National Bank OF TORRANCE

TOTAL RESOURCES OVER ONE MILLION DOLLARS

## Professional Directory

Dr. C. E. Hotchkiss  
Chiropractor

X-Ray and Laboratory Service  
1311 Sartori Ave., Levy Bldg.  
Phone 186 Torrance

DR. C. W. ALLEN  
Palmer Graduate  
Chiropractor

Sherman Bldg., 1337 El Prado  
Torrance  
Phone 100-W

DR. R. A. HOAG  
DENTIST

New Edison Bldg.  
1419 Marcelina Ave.  
Just West of Postoffice  
Complete X-Ray Service  
Torrance Phone 198

Dr. O. E. Fossum  
Dentist

X-Ray Service  
Hours: 8 a.m. to 5 p.m.  
Sam Levy Bldg.  
1311 Sartori Ave.  
Phone 186—Torrance, Calif.

PERRY G. BRINEY

ATTORNEY-AT-LAW  
110 First National Bank Bldg.  
Phone 159 Torrance

Dr. Norman A. Leake  
Physician and Surgeon

Office, First National Bank Bldg.  
Telephone 90  
Residence, 1525 Marcelina Ave.  
Telephone 13-M

J. R. JENSEN  
Attorney at Law

State Exchange Bank Bldg.  
Torrance, California  
Phone Torrance 8

Drs. Lancaster and Shidler

PHYSICIANS AND SURGEONS  
Phones: House, 15 and 118  
Office, First National Bank Bldg.  
Res., Cor. Post and Arlington  
Torrance California

Dr. Louis A. Volse

Osteopathic Physician and Surgeon  
Apt. 1, Castle Apts. Phone 128  
1215 El Prado, Torrance

Dr. A. P. Stevenson  
Physician and Surgeon

Office, Sherman Bldg., 1337 El Prado  
Phones: House, 185-W Office, 96  
Torrance, Calif.

Dr. F. H. Racer  
PHYSICIAN AND SURGEON

Office Phone, Lomita 28  
Office in Barnes Building  
Lomita, California  
Residence, 2418 Redondo Blvd.  
Telephone, Lomita 118

DR. MAUDE R. CHAMBERS  
Chiropractor

First National Bank Bldg.  
Torrance  
Phone 121-J. Res., 109-W

Engraved or Printed

Wedding Invitations

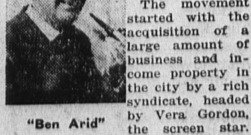
and Announcements

Wide Assortment of Styles

Torrance Herald  
1419 Marcelina Ave.  
Torrance

Our Want Ads Bring Results

What bids fair to become one of the most spectacular movements for the development of an already rapidly growing city ever seen in the Southland has been launched in Hawthorne.



"Ben Arid"

### Amaranth Court Is Constituted At Church Here

Officers Are Installed at a Highly Impressive Ceremony

The Lomita Court of the Amaranth became an accomplished fact last Thursday evening when Grand Royal Matron Honored Lady Julia Woodruff and her suite constituted the court.

The constitution ceremonies were preceded by a banquet served by the Ladies' Aid of the Community Church, at which covers were laid

for 100 members and guests. The tables and lodge rooms were beautifully decorated with gorgeous flowers; the Amaranth color, red, intermingled with an artistic tracery of green.

Following the constitution, the doors were opened to about 200 guests, who witnessed the installation of the officers.

Officers Installed  
With the grand officers filling the stations, the following officers of the Lomita Court were installed: Honored Lady Alwina Lewis-Schwartz, royal matron; Sir Knight John Glenn Wilson, royal patron; Honored Lady Helen Wilson, associate royal matron; Sir Knight Arthur Caldwell, associate royal patron; Sir Knight Albert H. Bartlett, treasurer; Honored Lady Bertha Martin, secretary; Honored Lady Margaret McCartney, conductress; Honored Lady Dortha

One of the features of the building will be a tower fifty feet high. The new theatre is to be located in one of the beauty spots of Hawthorne, central from every part of the city, with plenty of parking space for autos.

The means of financing will be the sale of the 8 per cent preferred stock of the Hopkins-McNeil Investment Company. Two shares of the 8 per cent preferred stock, par value \$100, and one share of common, will be sold for \$200. No commission will be paid to brokers or agents for the sale of these shares.

May Roberts, associate conductress; Honored Lady Margaret Radcliff, marshal in the east; Honored Lady Harriet Olson, marshal in the west; Honored Lady Ethel Hazel Caldwell, standard bearer; Honored Lady May Sidebotham, prelate; Honored Lady Melissa Perkins, historian; Honored Lady Bessie West, warden; Honored Lady Ethel P. Waite, chairman of trustees; Sir Knight Norman Herr, sentinel; Honored Lady Edna Clark, musician; Honored Lady Jeanie Harris, Truth; Honored Lady Madeline Powers, Faith; Honored Lady Lella Thompson, Wisdom; Honored Lady Sallie Shouse Webber, Charity.  
Crown Royal Matron  
A beautiful and impressive part of the installation ceremonies was the crowning of the Royal Matron by the supreme royal matron of the Arizona Court of the Amaranth. The ceremonies were opened by

This is simply a start in the building campaign handed by William McNeil of the Hopkins-McNeil Investment Company. They also plan the building of a mammoth department store and a wonderful dance casino, as well as a tourist hotel; in fact, William McNeil has already selected Lot X on Parkway and Acacia streets as the site for the hotel.

The Hopkins-McNeil Investment Company have acquired some of the most valuable corners and business frontage in Hawthorne, which of course enhances the value of their stock.

a solo by one of the grand officers, and during both the constitution and installation David Morse was heard in baritone solos.

The Fullerton Court presented Lomita Court with a beautiful silver salver.  
The members of the court were highly complimented by the grand royal matron upon the thoroughness of their work and their complete equipment. It is unusual for a court to be ready for constitution within six months after its institution.

Lomita Court was ready in two months and, according to the grand royal matron, the officers conducted themselves as officers old in the work, rather than new. Included among the members of the grand royal suite were G. R. M. Julia Woodruff, G. R. P. John Livingston, Grand Lecturer May McCormick, and Associate Grand Lecturer Charlotte Leonard.