

HATS - SHOES  
BATHING TOGS  
FURNISHINGS

IF .... "DUFFY HASIT"  
(Redondo's Busy Store)

IT'S RIGHT

BATHING TOGS  
FURNISHINGS  
HATS - SHOES

# LOMITA PUBLIC MARKET

Self Service Store

## Groceries

Special For Friday  
and Saturday

10 LBS. SUGAR 75c

Grape Nuts -----15c  
Compound, 2 lbs.-----25c  
1 lb. can Calumet B. Pow-  
der -----27c  
Fancy Head Rice, 4 lbs.-----25c  
Kellogg's Kumbles, 2 pkg.  
for -----25c  
Campbell's Pork and Beans,  
2 for 25c, 6 for-----69c  
Regular 15c per can

A. B. DAVIS

Phone--177-J-1

We Deliver All Orders of \$2  
or More

## Meats

A TREAT

FOR THAT SUNDAY DINNER

Or Decoration Day Picnic

Would be one of those nice  
Steaks, Roasts or some nice  
Sliced Ham that we have such  
a nice and fresh selection of.

H. F. SCHMIDT

Lomita Meat Market

Phone 171-J-2

LOMITA

## Bakery

YOU WANT THE BEST

We strive to please in Service,  
Quality and Moderate Prices.

Once you have eaten of our  
Bread and Pastry you will  
want no other. Come today  
and make a selection for that  
Sunday Dinner and for Dec-  
oration Day in Cakes, Pies and  
Cookies.

THE GLOBE BAKERY

G. Groves

S. I. Groves

Phone 171-J-2

LOMITA

## LOMITA NEWS ITEMS

Mrs. E. B. Schriver of Eshleman  
and Flower streets is reported on  
the sick list this week.

Mrs. Fred Doane, who has been  
under the care of physicians in a  
Los Angeles hospital for two weeks,  
where she was compelled to under-  
go a major operation, is home again  
and her friends are all pleased to  
know that she is so rapidly recov-  
ering.

Miss May McDougall of Nar-  
bonne avenue is visiting in Los An-  
geles with her uncle and aunt, Mr.  
and Mrs. Alex McDougall.

## BOY SCOUTS TO CHURCH

Rev. E. E. Clark of the Lomita  
Community Church has extended a  
special invitation to the Boy Scouts  
to attend church next Sunday morn-  
ing in a body, and would appreci-  
ate them coming in uniform. A  
special message will be given for  
their benefit.

## WANTED--A HOME

The first requisite for a success-  
ful and contented family, which,  
by the way, is the only one that  
can raise happy, healthy and in-  
telligent children, is a home. There  
is no single element which does so  
much toward the making of de-  
sirable citizens as the possession of  
a home. It spells pride of owner-  
ship, self-respect, industry, reliabil-  
ity, permanence and active interest  
in our government. It also serves  
as a haven in times of adversity;  
a ballast in times of prosperity.

It most assuredly is the birth-  
right of every child, and in it are  
born the golden memories of later  
years. Truly the home is the foun-  
dation of character.

It is not strange, therefore, that  
any condition which strikes at the  
home is considered a menace to the  
whole fabric of civilization--to the  
vital welfare of the nation.

Yet that condition exists today--  
exists to a degree pregnant with  
danger.

America is short two million  
homes. More than ten million  
Americans are without homes. More  
than twice this number are crowded  
into undesirable quarters.

Ordinarily the May 1st horror  
of drifting aimlessly from one  
apartment to another is felt by the  
inhabitants of cities only--the con-  
servative family of the small town  
being free from the nomad habits  
of the at dweller.

But no mere whim of the dis-  
contented city housewife who year-  
ly migrates from apartment to  
apartment and house to house is  
responsible for the situation that  
exists today. The great tribe of  
homeless is not this year limited  
to the city alone. It has invaded  
the town, the village and even the  
farm and the ranch. In fact,  
there is not one family in a thou-  
sand that has not felt its effect,  
and exceedingly few that have not  
suffered from it. Before the sum-  
mer is over, we are assured, there

will not be one family in five thou-  
sand which will not feel the influ-  
ence of this condition.

At first thought it seems rather  
far-fetched to imagine that a re-  
mote country house could be drafted  
into service to relieve an apartment  
shortage in a distant city. Yet that  
is exactly what is occurring in all  
parts of the country. For example,  
in Cook County, perhaps fifteen  
miles from Chicago, there is a large  
colony of market gardeners, a great  
many of them working rented  
ground and living in rented houses.

Within five miles of them is the  
outer edge of the outskirts of the  
town, where hundreds of modest  
city workers have erected their  
homes. The shortage of homes in  
Chicago has caused thousands of  
Chicago people of some wealth to  
move farther out and buy up such  
property for the erection of homes.  
In a single neighborhood over six-  
ty such little home lots and rented  
truck gardens have been turned  
into homes of the well-to-do.

Also hundreds of others have  
moved from the city proper into  
the outlying suburbs, towns within  
a radius of twenty-five or thirty  
miles. Here again small farms  
were taken over, and being taken  
over daily. The same applies to  
practically every city in the coun-  
try.

So here we find hundreds upon  
hundreds of small gardeners and  
farmers forced away from the city  
neighborhood. They naturally wish  
to stay as close to the city as pos-  
sible and move a few towns, or per-  
haps a county or two, farther out,  
they in turn crowding farmers and  
chicken raisers still farther afield.  
And so it goes, each class moving  
farther from the city and crowding  
out those that lay beyond them.

The country community is the  
very backbone of the nation, and  
from the homes on the farms and  
in the small towns come the very  
finest of our citizens. Therefore,  
the country home must not be ne-  
glected.

## SOUR MILK RECIPES

### SOUR CREAM PIE

1 cup sour cream, 1/2 cup sugar,  
1 egg, beaten; 1/2 teaspoon salt, 1/4  
teaspoon cloves, nutmeg and gin-  
ger; 1/2 teaspoon of cinnamon. Mix  
cream and sugar together, add egg,  
salt and spices. Line a pan with  
pastry, pour in the mixture, cover  
with pastry and bake in a moderate  
oven.

### COTTAGE CHEESE

To make cottage cheese, take  
thick sour milk, turn into a shal-  
low milk pan, filling with hot, not  
boiling, water; let stand about 25  
minutes, then drain through a col-  
ander, and pour hot water through  
the curd until it loses its sour  
taste and has become contracted,  
but not hard. Press all the water  
out, salt and shape into small balls  
or pack in a mold. If the sour  
milk is heated on the stove and  
strained through a cloth it will  
not be as palatable or as digestible  
as by this hot water method.

### RICE WAFFLES

1 cup flour, 1/2 teaspoon salt, 1  
teaspoon soda, 1 teaspoon baking

powder, 2 eggs beaten separately,  
2 cups sour or buttermilk, 1 cup  
cooked rice, 2 tablespoons melted  
shortening. Sift dry ingredients.  
Beat whites of eggs until stiff, the  
yolks until creamy; add milk and  
rice to yolks and add gradually to  
dry ingredients; mix well and fold  
in the stiffly beaten whites and the  
shortening. Cook at once on a  
well-heated griddle.

### SOUR MILK PANCAKES

2 cups flour, 1/2 teaspoon salt, 1  
teaspoon soda, 1 teaspoon baking

powder, 1 egg, 2 cups sour milk.  
Sift dry ingredients. Beat egg, add  
milk and combine mixtures.

### CORN MEAL PANCAKES

1 cup corn meal, 1 cup boiling  
water, 1 cup flour, 2 cups sour or  
buttermilk, 1 teaspoon soda, 1 tea-  
spoon baking powder, 1 teaspoon  
salt, 2 teaspoons sugar, 2 eggs.  
Pour boiling water over the corn  
meal and let stand until cool. Sift  
dry ingredients. Beat eggs, add  
milk, dry ingredients and corn  
meal. Left-over cooked corn meal  
cereal may be used to make these  
cakes.

### BREAD CRUMB BRIDDLE CAKES

2 cups sour or buttermilk, 1 cup  
bread crumbs, 1 egg, 1 teaspoon  
baking soda, 1 teaspoon baking  
powder, 1/2 teaspoon salt, 1 cup  
flour, 1 tablespoonful melted short-  
ening. Soak the crumbs in one  
cup of sour milk until soft, then  
beat until smooth. Beat egg until  
light, add one cup sour milk and  
the bread crumb mixture; then add  
sifted dry ingredients. Beat until  
well mixed and smooth; add short-  
ening and bake at once on a hot  
griddle.

### GINGERBREAD

2 cups flour, 1 teaspoon soda, 1  
teaspoon cinnamon, 3 teaspoons  
ginger, 1 teaspoon salt, 1 teaspoon  
baking powder, 1 cup molasses, 1/2  
cup sour or buttermilk, 1 egg, 1/2  
cup shortening. Mix and sift dry  
ingredients. Put molasses and  
shortening into a sauce pan and  
heat slowly until shortening is  
melted and mixed with molasses.  
Beat egg, add milk, then molasses  
mixture and dry ingredients. Bake  
in well-greased, shallow pan or  
muffin tins in a moderate oven 25  
minutes. Gingerbread is greatly  
improved by adding the grated rind  
of an orange to the batter before  
baking. One-third cup chopped  
walnuts or raisins may be added  
also.

Get your goods for your bung-  
low apron at the Eshleman Grocery  
--Adv.

FLORENCE  
"HARDWARE" REEVE

# \$90,000 Furniture Sale

In A Big Closing Out Sale. Your Opportunity.

The imperative need of room for the expansion of our lower floor departments necessitates the disposing of our entire furniture stock immediately. No more reliable or thoroughly up-to-the-minute stock of furniture can be found in all Southern California. It goes on sale without any reservations--EVERY SET, EVERY SINGLE PIECE INCLUDED.

We wish to emphasize the fact (please carefully make note of this statement) that every regular price quoted, either in our printed or spoken word during this sale, is based, as nearly as we can ascertain, upon present wholesale costs. That is to say, regardless of ORIGINAL COSTS we have placed retail prices on a fair profit margin above PRESENT WHOLESALE VALUE.

You can readily see that this further discount brings furniture to you at most extraordinarily low prices--prices which we are sure have been unequalled for many, many months.

When you remember the merchandising policy of this store--its record for fair, straightforward dealing over a period of more than sixteen years--you will appreciate more fully, perhaps, the real significance of sale.

## Reduction Range From

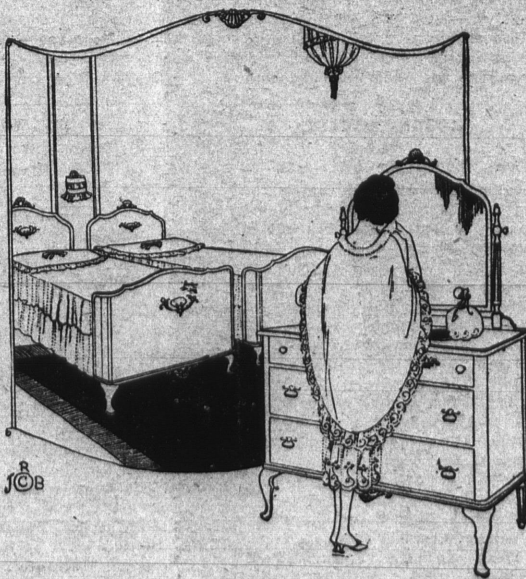
25% to 50%

OFF REGULAR PRICES

Grasp the meaning of these discounts! Think of the tremendous savings which they mean! Realize that these discounts are from present low prices. 25% to 50% saved on every dollar expended for furniture during this sale.

## For All The Home

Furniture of every description, in sets and single pieces, also including the famous Acorn Gas Ranges, at these sweeping discounts. Although thousands of dollars worth of furniture has already been sold to delighted purchasers, this sale has scarcely begun and there are wonder! oppor-  
nities awaitin gyou here NOW.



PINE AVENUE  
AT BROADWAY

Buf fums'  
Formerly The Mercantile Co

LONG BEACH  
CALIFORNIA

WE DELIVER TO ALL POINTS IN SOUTHERN CALIFORNIA