

Globe Bakery

Patronize Your Home Bakery

"Ask Your Grocer for the Home Made
Globe Loaf

We appreciate the unanimous support you are giving to your home bakery.

We Put Quality Into Each Loaf
Fresh Every Day—No Stale Bread Here

YOU'LL LIKE IT!

Gordon Groves LOMITA S. L. Groves

WE ARE IN TOUCH WITH

Santa Claus' WORKSHOP

HE HAS DESIGNATED OUR STORE AS HIS

Headquarters



OUR HOLIDAY LINES ARE THE LARGEST
Our Patterns are Exclusive and Up to Date

'HARDWARE' REEVE

TORRANCE

CALIFORNIA

A SQUARE DEAL

When you buy from a big city store and don't happen to get what you feel is a square deal you withdraw your trade, and find later that it isn't a drop in the bucket. Thousands of others who know nothing about your experience go right on trading there, and others come into the city and give that store their business.

But it is different with merchants in towns like Torrance and Lomita. They can't afford to have dissatisfied customers. Their territory is limited, and if they lose very many customers they are paying the way to financial failure. That is why you are sure of a square deal when you trade with your home merchant. He knows he has to depend upon your trade, along with the trade of people you know personally, so he doesn't pass up any seeming complaint you may have with a snap of the finger. He knows he must have the patronage and good will of the people right around him or he is gone. He knows new customers are no pouring into the store every day. It is the old ones upon whom he must lean for his support.

There are a thousand and one other reasons why you are safe when you trade at home, but can you think of a better one than this—the assurance that you are going to get a square deal? Talk about the big city merchant doesn't hurt him, for your talk doesn't get very far. But the home merchant knows he must have your good will, and he takes few if any chances on losing it. As a result he plays safe, you are sure of a square deal, and it means something to both of you.

NOTICE

The first half of the 1920-1921 taxes are now due and payable before 6 p. m. on December 6, 1920 to avoid penalty.

The Dominguez Land Corporation have the amount of Taxes on Lots etc. in Torrance Tract and Tract South and West of Torrance, and will accept payments until December 4th, and if desired, will remit for same so as to avoid penalty.

DOMINGUEZ LAND CORPORATION
Pub. Nov. 26—Dec. 3, 1920.

Nelson H. Reeve, \$300 and \$500 Houses.

MANY HOMES UNDER WAY IN LOMITA

As 1920 draws near to a close, Lomita shows a wonderful growth during the past eleven months. Last Week it was reported that one contractor alone finished nine houses and all other building contractors were at work somewhere on the tract. This state of affairs has existed here all during the spring and summer months, and when the year will have come to a close over 200 new homes will be the result of the year's building activities. Construction of new homes has not been centered in one spot, but takes in all sections of Lomita and if one were to judge popularity of property from real estate transfers it would be hard to pick out one street that has "buying" advantages over another as new families are to be found in all directions.

January 1, 1920, there were 39 houses in Lomita, and today by actual count there are considerably over 600. Some of the most conservative boosters we have here claim that by natural growth there will be over 1000 houses in Lomita before the year 1921 has passed into history. Every Sunday brings homeseekers here by the hundreds who spend the day "shopping" for desirable acre homes that can be purchased at the right figure. These prospects are not many from eastern states, or tourists, as they are from San Pedro, Long Beach and Los Angeles, and other nearby places who have heard of the wonderful home life offered in Lomita Acres. The tide has turned Lomita-ward and its up to the people of this vicinity to take care of those who wish to locate here.

OFFICIAL ELECTRICIANS

The Lomita Electric Company has secured a contract to do all the electric wiring on the Hammerton tract and have several jobs under way at present. This company is located in the Schmid block, Lomita, and have recently opened their new store and added fixtures, together with battery and ignition work. A great part of their time will be taken up with the work in connection with building operations in Hammerton.

Send your home paper to a friend

Fess Grocery Specials

Soap

- White Navy, per bar5c
- Creme All Soap, 3 bars for25c
- Cocoa Naphtha, 2 bars for15c
- Jewel Laundry Soap, per bar5c

Breakfast Foods

- Two-Minute Oat Food, reg. 20c pkg, per pkg.15c
- Eat More Health Food, reg. 15c pkg., 2 for25c
- Cream of Barley, per pkg.20c
- Carnation Oats, large pkg.38c
- Carnation Oats, small pkg.15c

ORDERS DELIVERED AND SOLICITED

Meat Orders Delivered with your Groceries

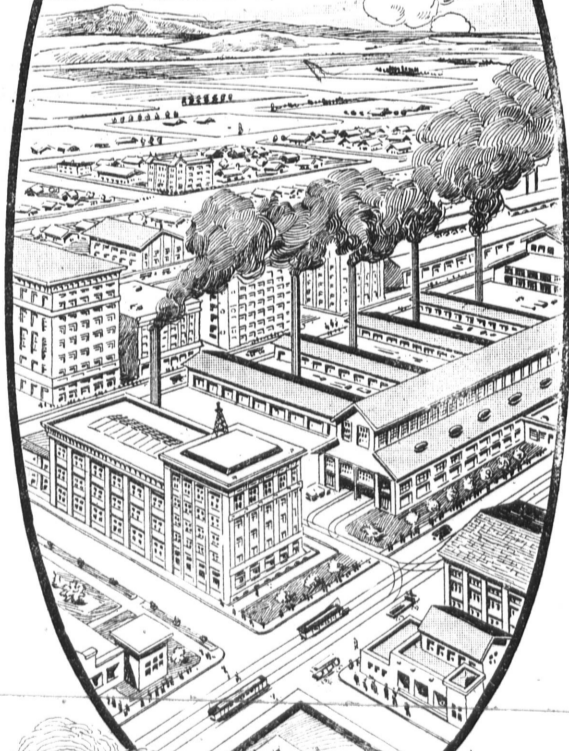
PHONE 9

TORRANCE

CALIFORNIA

Torrance

The Modern Industrial City Of California



What Torrance Offers The Investor

Torrance offers today the same opportunities that existed a few years ago in Hammond and Gary, Indiana—cities that became famous as "money-makers" for investors. Torrance, however, has the distinct advantage over Hammond and Gary of being the home of many industries instead of only one.

What Torrance Offers The Worker

Living conditions in Torrance are as nearly ideal as can be found anywhere. Workingmen have every condition conducive to health and happiness—homes of the most substantial character, surrounded by lawns and gardens; stores and markets which contain anything to be found in larger cities; gas, electricity, the purest of water, and such other surroundings and conveniences as will increase their earning power and prosperity.

Home Sites for Employes and Home Seekers Lots, Acres, Half Acres, as low as \$10 down and \$10 Per Month.

M. L. MAY, The New Sales Manager is on the Job.

SEE US ABOUT OUR GARAGE HOME PLAN ADDED ADVANTAGES

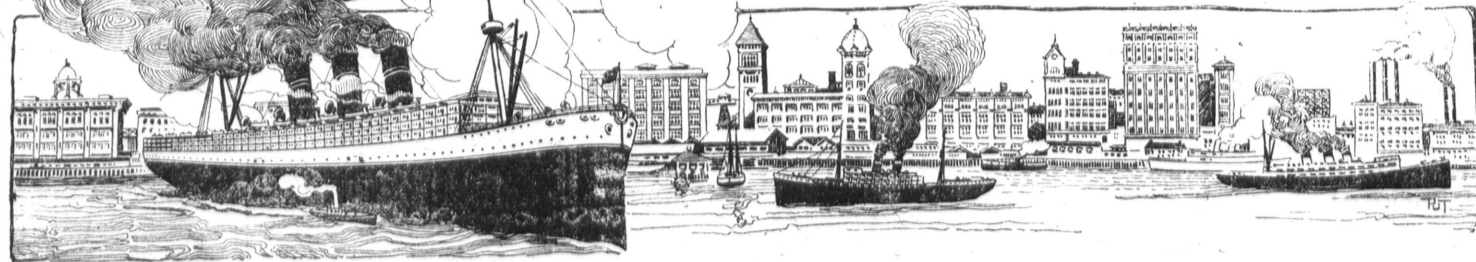
LESSER TAXATION

LESS ACREAGE COST

Dominguez Land Corp.

PHONE 5

TORRANCE OFFICE—1207 EL PRADO ST.



The Modern Industrial City Of California