

## Bank Convenience

So many of our Customers are expressive of the convenience and service of this institution. We appreciate this compliment by our Customers and invite others to enjoy this convenience.

**CAPITAL \$25,000**  
—Fully Paid Up—

**Safe Deposit Boxes for Rent, \$2.50 per Year**  
Phone 171-J-12

Banking Hours 9:00 to 12:00, 1:00 to 3:00, Saturdays 9:00 to 12:00  
Commercial Savings

NOTARY PUBLIC

4% INTEREST ON YOUR IDLE FUNDS

**State Bank of Lomita**

## Globe Bakery

### Patronize Your Home Bakery

"Ask Your Grocer for the Home Made  
Globe Loaf"

You can help build your community  
by patronizing home institutions.

We Put Quality Into Each Loaf  
Fresh Every Day—No Stale Bread Here  
YOU'LL LIKE IT!!

Gordon Groves LOMITA S. L. Groves

For Lomita Property and Information See J. A. SMITH  
Original Tract Agent—The Man who spends all his  
Time and Money to Make Lomita Property More  
Valuable. Telephone 179-J-11.

The water supply of the city of Tunis is obtained from the same source that supplied ancient Carthage and some of its cisterns are still in use.

The fly flies at the rate of five feet a second when leisurely sporting in the air, but if a bird gives chase, he can increase his speed to thirty-five feet a second.

## TORRANCE ENTERPRISE

Published Every Friday  
C. P. ROBERTS J. FRISHMAN  
Publishers  
Office In P. O. Building. Phone 1

Subscription Rates in Advance  
One Year, \$2.00  
Single Copies ..... 5c

Application made for entrance as second class matter in Torrance Post Office pending.

### THE BREAKFAST SMILE

How many people seldom smile at the breakfast table? I have sometimes thought that breakfast might well be cut out of the daily program of some families because the members are so disposed to come to the table cross and ugly. Someone has said that if we can keep pleasant until ten o'clock all will be right with us during the remainder of the day. Breakfast is undoubtedly the most trying meal. It is so easy to lose your temper, our poise, at the breakfast table, if things go wrong, if the meal is late, or some of the food badly prepared, especially if your night's rest has been disturbed or insufficient.

Did you ever realize that most of the tragedies which wreck homes originate in trifles, in little bickerings or rebukes, little fires which could have been extinguished before they become conflagrations.

Just a little self-control, a little mental chemistry, would often put out such a fire; but instead of applying the antidote, playing water on the fire, how many people use mental kerosene, which they throw on in arguments and angry retorts, thus adding more and more to the conflagration and making it the more fatally disastrous. A little consideration for others, a little forbearance, a little tolerance and good cheer would in most cases soon restore peace and harmony in the family circle, but instead, how many people go about the home sulky and morose, and ready to vent their spleen at the slightest provocation!

Mr. Brown and son, Donald of San Bernardino, and Roy of Gardena were visitors in Lomita Sunday at the home of Mrs. Brown of the Redondo boulevard.

Translucent oyster shells from the windrows of thousands of habitations of Manila.

## HOLZMAN'S

Wonderful Revision of Prices Effective at Once.

## No Special Sale Prices

Here to stay. Permanent. Fixed. Pre-War Prices on All Merchandise. Everything in COTTON and WOOLEN Material Reduced.

Silks and Everything Made of Silks; Hosiery, Underwear, Skirts, Back to Pre-War Prices.

Every Department Shows This Wonderful Revision.

**Prices Cut--Reduced--Slashed**

**No Prices quoted.**

**Come and See for yourself**

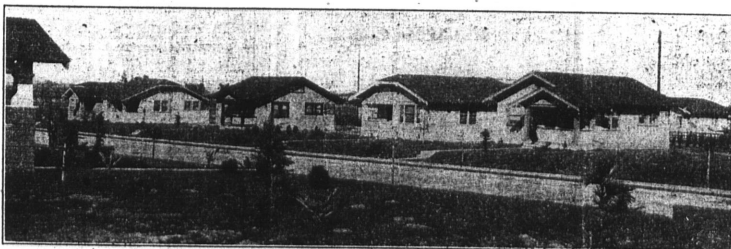
## HOLZMAN'S

THE BEST IN DRY GOODS

**123 Sixth St. San Pedro, Cal.**

# THE DEVELOPMENT OF Torrance

The  
Modern  
Industrial  
City Of  
California



The  
Modern  
Industrial  
City Of  
California

—The remarkable development of Torrance since its inception in 1912 will not be surprising to those who study the question of city expansion. Its location between Los Angeles and its harbor at San Pedro has brought Torrance within the direct line of development. —Modern in its scope and planned by the World's Foremost City Builder and landscape artist, Frederick Law Olmstead, Torrance has always shown a steady growth and is assured of a great future development.

## THE BETTER CITY

—Dana Bartlett in "The Better City," says: "Torrance is America's first industrial city, where the newest of the new and the best of the old unite to form an ideal City."

—"One views this model industrial city with its great plants, employing their thousands of workmen, with wonder."—L. A. Times.

—No modern city has had its foundation laid under more favorable circumstances than this fortunately planned city of Torrance. The comforts and convenience of homeseekers, expressed in modern homes set in the midst of the most attractive surroundings, was the provision made for the upbuilding of Torrance.

**Home Sites For Employers and Homeseekers at Less Than Rent Prices. Large lots, Quarter, Halves and Acres**

**The New Sales Manager is on The Job—M. L. MAY**

Formerly Sales Manager for T. M. Miller Company of Los Angeles, will be glad to extend courtesies to anyone interested in Torrance either as a home seeker or Investor.

Added Advantages

Lesser Taxation

Less Acreage Cost

# Dominguez Land Corporation

PHONE 5

TORRANCE OFFICE