

SIX GREAT AMERICANS.

Six great Americans, among thousands of men and women of other nations who have seen the Mission Play at San Gabriel during the past ten years, have made the following remarkable expressions concerning John Steven McGroarty's California pageant drama which is now approaching its nineteenth hundredth performance: John Hays Hammond, the world's most famous engineer, says: "The Mission Play impressed me more profoundly than anything I have ever witnessed." Dr. Henry Van Dyke, pre-eminent

among the literary men of America, and Professor of English at Princeton University, says:

"The Mission Play is the world's greatest pageant drama."

Thomas Riley Marshall, former president of the United States, says: "I count the day I spent at the Mission Play one of the happiest days of my life."

William Allen White, editor of the Emporia, Kansas Gazette, and the best known of American publishers, says:

"The Mission Play is one of the tremendous big things of the world." Cyrus H. K. Curtis, publisher of

THE PALOS VERDES HILLS

'Tis "P. V. Hills" that gives the thrills

To Torrance Boys at home; Nothing is like it in all the world, However far we roam.

The "P. V. Hills" are getting green, What will their future be? With snowcapped mounts and cities vast And boundless sparkling sea.

They slumber long to wait our day, O, Torrance, our delight! Was ever any hope so clean, Or any sky more bright?

No lure so strong in any land As Torrance with its mills, Uniting with the ocean sands And Palos Verde Hills.

A. L. PARSONS, Keystone Tract.

EVERY HOME A WHISTLE

Throughout our Keystone Tract, Every home a whistle; We'll take no answers back, Our old and young must read it And blow the whistle strong, Since Torrance it means business, Let's greet the coming throng.

Our crystalizing efforts No longer a dream, The people they are coming, A marching, living stream; Then toot and blow the whistle, And make our neighbors know This is no time for sneering, This is the time to DO!

Then let Torrance notes echo, From mountains to the sea, And not of Torrance of the past, But of Torrance that is to be; For Torrance it means business, The Whistle tells us so.

And the more whistles that are blowing The more will Keystone grow, So "every home a whistle" Throughout our Keystone tract, Since "Torrance it means business" Let's have no answers back. A. L. PARSONS, Keystone Tract.

the Ladies' Home Journal, and the Saturday Evening Post, says:

"I was amazed at the Mission Play, and my emotions were deeply stirred by it."

Willard Mack, eminent playwright, says:

"When I find myself losing faith in God and man, I go over to San Gabriel and sit through the first act of the Mission Play."

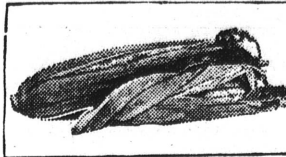
No other stage production in history has brought forth encomiums to equal or compare with these tributes to the Mission Play.

WHEN TO PLANT SWEET CORN

Seed Should Not Be Sown Until Ground Is Warm and No Danger From Frost.

Sweet corn should be planted on rich land and cultivated the same as field corn. Plant the seed as soon as the soil is warm in the spring, and make successive plantings every two or three weeks until late summer. The same results can be obtained to some extent by planting early, medium and late varieties. Plant the seeds about two inches deep in drills three feet apart and thin to a single stalk every 10 to 14 inches.

Sweet corn, when grown in the South, passes so quickly from the milk to the dough stage that care should be exercised to gather the crop just at the right time, in order to secure the most satisfactory results. The flavor of sweet corn depends upon its stage



Corn in the Home Garden.

of maturity and the method of handling the product from the plant to the table. Sweet corn loses its sugar content very rapidly after being removed from the stalk. It should, therefore, be picked only a few hours, and preferably a few minutes, in advance of the time when it is to be placed in the pot.

Varieties recommended: For early corn Golden Bantam and Adams Early are suggested, and for medium and late varieties Black Mexican or White Mexican, Country Gentleman and Stowell's Evergreen. The last-named variety has the largest ears and is the most productive.—United States Department of Agriculture.

CARD OF THANKS

Mrs. W. D. Russell of Cota street and Mrs. Pauline Harris of Vista Highlands wish to thank their many friends, and especially the business men of this city, who bestowed much sympathy and kind acts upon Mr. Russell during his long illness and stay in the hospital recently.

Mrs. Goff and son, George, of Los Angeles, are now located in their new home on Portola avenue.

Mrs. Fred Lessing and son, Paul, with mother, Mrs. Abott, of Hollywood, and other relatives motored to San Diego last week for two days.

Directors of the Dominguez Land Company were Torrance visitors on Wednesday.

Mrs. Lucile Welch of the Castle Apartments attended the meeting of the philanthropy section of the Comos Club in Los Angeles Wednesday.

Make Your Money Pay for its Keeping

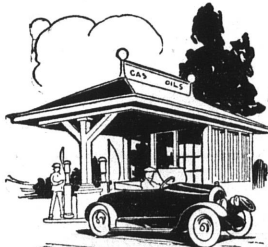
By Putting It In THE STATE BANK of LOMITA

4% Interest on the Savings or Time Deposits

STATE BANK OF LOMITA

"THE FRIENDLY BANK"

H. V. ADAMS, Cashier.



YOUR NEXT STATION STOP should be at C. W. Smith's, where you will find the best motor oil for all purposes. We charge no more than for and most efficient gasoline and inferior grades. Ask any motorist who uses our service—he will tell you there is no better.

We Charge Batteries

LOMITA FILLING STATION C. M. SMITH, Prop.

Free Parking P. O. BLDG.

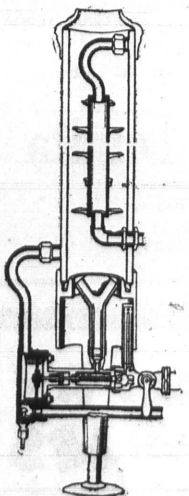
Free Battery Service LOMITA



Get Your GROCERIES at TUCKER'S

City Prices

ICE CREAM, SOFT DRINKS, CANDY, TOBACCO Cor. Narbonne & Red. Blvd. LOMITA



The Ever-Ready is the most compact automatic heater made—only 6 inches in diameter and finished in Ivory enamel, it is an ornament, not an eyesore—

Don't build a modern home and put in an old style heater. Antique furniture may be all right, but who wants an antique water heater? Up-to-date people want an up-to-date heater, the



is "The Modern way to heat water." It "heats more water per dollar."

A native son—Young, tall and handsome

LOMITA PLUMBING COMPANY

FIRST CLASS PLUMBING AND GAS FITTING

Repair Work A Specialty

All Work Guaranteed

Lomita Calif.

FLORENCE

Apex Tunings

are guaranteed to stop piston slap, oil pumping, increase the power of your motor by increasing your compression.

For sale and installed by

Earl M. Gipe

2223 Andreo Ave.

TORRANCE CALIF.

FREE "HOOTCH"

A Sparkling Stimulant, Full of Wit and Humor. Free copy will be sent upon receipt of your name with address complete. Write to G. Mitchell, 397 Pearl St., Brooklyn, N. Y.

Blank Cartridge Pistol

Well made and effective. Appearance enough to scare a burglar, tramp or dog. Just like Revolver and just as effective. No danger to life. Can lay around without risk or accident to woman or child. Price, \$1 post paid. Superior make \$1.50, Blank .22 Cal. Cartridges shipped express, 75c per 100. STAR MFG. AND SALES CO., 321 Manhattan Ave., BROOKLYN, N. Y.



10 lbs. So. California Sugar 55c

3 PACKAGES LUX 25c

7 BARS LENOX SOAP 25c

3 lbs. Seelig's Favorite Coffee .62c

3 LBS. BULK MACARONI AND SPAGHETTI 28c

Shredded Wheat . 9c Roman Meal . 30c

GRAPE NUTS 15c

PHOSPHO MEAL 23c

10 BARS BEN HUR SOAP 45c

WHITE KING MACHINE SOAP, LARGE 45c



BATHING TOGS HATS - SHOES FURNISHINGS

IF

"DUFFYHASIT"

(Redondo's Busy Store)

IT'S RIGHT

BATHING TOGS FURNISHINGS HATS - SHOES