

HATS - SHOES  
BATHING TOGS  
FURNISHINGS

IF... "DUFFY HASIT"

(Redondo's Busy Store)

IT'S RIGHT

BATHING TOGS  
FURNISHINGS  
HATS - SHOES

# LOMITA PUBLIC MARKET

## Self Service Store

### Groceries Special For Friday and Saturday

10 LBS. SUGAR 75c  
Grape Nuts 15c  
Compound, 2 lbs. 25c  
1 lb. can Calumet B. Powder 27c  
Fancy Head Rice, 4 lbs. 25c  
Kellogg's Kumbles, 2 pkg. for 25c  
Campbell's Pork and Beans, 2 for 25c, 6 for 69c  
Regular 15c per can  
A. B. DAVIS  
Phone-177-J-1  
We Deliver All Orders of \$2 or More

### Meats

A TREAT  
FOR THAT SUNDAY DINNER  
Or Decoration Day Picnic

Would be one of those nice Steaks, Roasts or some nice Sliced Ham that we have such a nice and fresh selection of.

H. F. SCHMIDT

Lomita Meat Market  
Phone 171-J-2 LOMITA

### Bakery

YOU WANT THE BEST

We strive to please in Service, Quality and Moderate Prices.

Once you have eaten of our Bread and Pastry you will want no other. Come today and make a selection for that Sunday Dinner and for Decoration Day in Cakes, Pies and Cookies.

THE GLOBE BAKERY

G. Groves S. L. Groves  
Phone 171-J-2 LOMITA

powder, 1 egg, 2 cups sour milk. Sift dry ingredients. Beat egg, add milk and combine mixture.

#### CORN MEAL PANCAKES

1 cup corn meal, 1 cup boiling water, 1 cup flour, 2 cups sour or buttermilk, 1 teaspoon soda, 1 teaspoon baking powder, 1 teaspoon salt, 2 teaspoons sugar, 2 eggs. Pour boiling water over the corn meal and let stand until cool. Sift dry ingredients. Beat eggs, add milk, dry ingredients and corn meal. Left-over cooked corn meal cereal may be used to make these cakes.

#### BREAD CRUMB BRIDDLE CAKES

2 cups sour or buttermilk, 1 cup bread crumbs, 1 egg, 1 teaspoon baking powder, 1 teaspoon baking powder, 1/2 teaspoon salt, 1 cup flour, 1 tablespoonful melted shortening. Soak the crumbs in one cup of sour milk until soft, then beat until smooth. Beat egg until light, add one cup sour milk and the bread crumb mixture; then add sifted dry ingredients. Beat until well mixed and smooth; add shortening and bake at once on a hot griddle.

#### GINGERBREAD

2 cups flour, 1 teaspoon soda, 1 teaspoon cinnamon, 3 teaspoons ginger, 1 teaspoon salt, 1 teaspoon baking powder, 1 cup molasses, 1/2 cup sour or buttermilk, 1 egg, 1/2 cup shortening. Mix and sift dry ingredients. Put molasses and shortening into a sauce pan and heat slowly until shortening is melted and mixed with molasses. Beat egg; add milk, then molasses mixture and dry ingredients. Bake in well-greased, shallow pan or muffin tins in a moderate oven 25 minutes. Gingerbread is greatly improved by adding the grated rind of an orange to the batter before baking. One-third cup chopped walnuts or raisins may be added also.

Get your goods for your bungalow apron at the Eshleman Grocery -Adv.

### FLORENCE "HARDWARE" REEVE

powder, 2 eggs beaten separately, 2 cups sour or buttermilk, 1 cup cooked rice, 2 tablespoons melted shortening. Sift dry ingredients. Beat whites of eggs until stiff, the yolks until creamy; add milk and rice to yolks and add gradually to dry ingredients; mix well and fold in the stiffly beaten whites and the shortening. Cook at once on a well-heated griddle.

#### SOUR MILK PANCAKES

2 cups flour, 1/2 teaspoon salt, 1 teaspoon soda, 1 teaspoon baking

### LOMITA NEWS ITEMS

Mrs. E. B. Schriver of Eshleman and Flower streets is reported on the sick list this week.

Mrs. Fred Doane, who has been under the care of physicians in a Los Angeles hospital for two weeks, where she was compelled to undergo a major operation, is home again and her friends are all pleased to know that she is so rapidly recovering.

Miss May McDougall of Narbonne avenue is visiting in Los Angeles with her uncle and aunt, Mr. and Mrs. Alex McDougall.

#### BOY SCOUTS TO CHURCH

Rev. E. E. Clark of the Lomita Community Church has extended a special invitation to the Boy Scouts to attend church next Sunday morning in a body, and would appreciate them coming in uniform. A special message will be given for their benefit.

#### WANTED-A HOME

The first requisite for a successful and contented family, which, by the way, is the only one that can raise happy, healthy and intelligent children, is a home. There is no single element which does so much toward the making of desirable citizens as the possession of a home. It spells pride of ownership, self-respect, industry, reliability, permanence and active interest in our government. It also serves as a haven in times of adversity; a ballast in times of prosperity.

It most assuredly is the birthright of every child, and in it are born the golden memories of later years. Truly the home is the foundation of character.

It is not strange, therefore, that any condition which strikes at the home is considered a menace to the whole fabric of civilization—to the vital welfare of the nation.

Yet that condition exists today—exists to a degree pregnant with danger.

America is short two million homes. More than ten million Americans are without homes. More than twice this number are crowded into undesirable quarters.

Ordinarily the May 1st horror of drifting aimlessly from one apartment to another is felt by the inhabitants of cities only—the congestive family of the small town being free from the nomad habits of the at dweller.

But no mere whim of the discontented city housewife who yearly migrates from apartment to apartment and house to house is responsible for the situation that exists today. The great tribe of homeless is not this year limited to the city alone. It has invaded the town, the village and even the farm and the ranch. In fact, there is not one family in a thousand that has not felt its effect, and exceedingly few that have not suffered from it. Before the summer is over, we are assured, there

will not be one family in five thousand which will not feel the influence of this condition.

At first thought it seems rather far-fetched to imagine that a remote country house could be drafted into service to relieve an apartment shortage in a distant city. Yet that is exactly what is occurring in all parts of the country. For example, in Cook County, perhaps fifteen miles from Chicago, there is a large colony of market gardeners, a great many of them working rented ground and living in rented houses.

Within five miles of them is the outer edge of the outskirts of the town, where hundreds of modest city workers have erected their homes. The shortage of homes in Chicago has caused thousands of Chicago people of some wealth to move farther out and buy up such property for the erection of homes. In a single neighborhood over sixty such little home lots and rented truck gardens have been turned into homes of the well-to-do.

Also hundreds of others have moved from the city proper into the outlying suburbs, towns within a radius of twenty-five or thirty miles. Here again small farms were taken over, and being taken over daily. The same applies to practically every city in the country.

So here we find hundreds upon hundreds of small gardeners and farmers forced away from the city neighborhood. They naturally wish to stay as close to the city as possible and move a few towns, or perhaps a county or two, farther out, they in turn crowding farmers and chicken raisers still farther afield. And so it goes, each class moving farther from the city and crowding out those that lay beyond them.

The country community is the very backbone of the nation, and from the homes on the farms and in the small towns come the very finest of our citizens. Therefore, the country home must not be neglected.

#### SOUR MILK RECIPES

##### SOUR CREAM PIE

1 cup sour cream, 1/2 cup sugar, 1 egg, beaten; 1/4 teaspoon salt, 1/4 teaspoon cloves, nutmeg and ginger; 1/2 teaspoon of cinnamon. Mix cream and sugar together, add egg, salt and spices. Line a pan with pastry, pour in the mixture, cover with pastry and bake in a moderate oven.

##### COTTAGE CHEESE

To make cottage cheese, take thick sour milk, turn into a shallow milk pan, filling with hot, not boiling, water; let stand about 25 minutes, then drain through a colander, and pour hot water through the curd until it loses its sour taste and has become contracted, but not hard. Press all the water out, salt and shape into small balls or pack in a mold. If the sour milk is heated on the stove and strained through a cloth it will not be as palatable or as digestible as by this hot water method.

##### RICE WAFFLES

1 cup flour, 1/2 teaspoon salt, 1 teaspoon soda, 1 teaspoon baking

# \$90,000 Furniture Sale

## In A Big Closing Out Sale. Your Opportunity.

The imperative need of room for the expansion of our lower floor departments necessitates the disposing of our entire furniture stock immediately. No more reliable or thoroughly up-to-the-minute stock of furniture can be found in all Southern California. It goes on sale without any reservations—EVERY SET, EVERY SINGLE PIECE INCLUDED.

—We wish to emphasize the fact (please carefully make note of this statement) that every regular price quoted, either in our printed or spoken word during this sale, is based, as nearly as we can ascertain, upon present wholesale costs. That is to say, regardless of ORIGINAL COSTS we have placed retail prices on a fair profit margin above PRESENT WHOLESALE VALUE.

You can readily see that this further discount brings furniture to you at most extraordinarily low prices—prices which we are sure have been unequalled for many, many months. —When you remember the merchandising policy of this store—its record for fair, straightforward dealing over a period of more than sixteen years—you will appreciate more fully, perhaps, the real significance of sale.

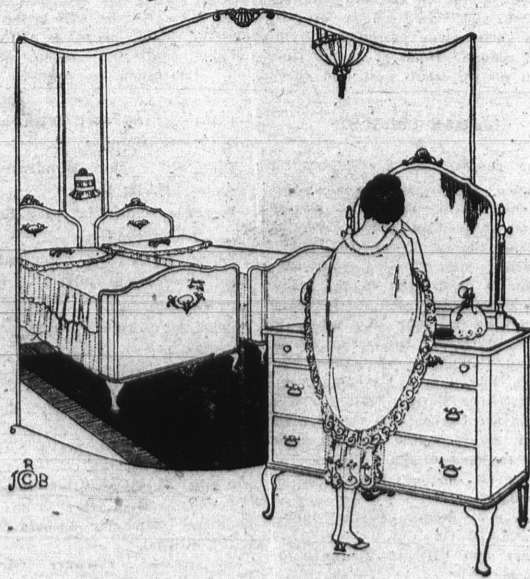
## Reduction Range From

25% to 50%  
OFF REGULAR PRICES

—Grasp the meaning of these discounts! Think of the tremendous savings which they mean! Realize that these discounts are from present low prices. 25% to 50% saved on every dollar expended for furniture during this sale.

## For All The Home!

—Furniture of every description, in sets and single pieces, also including the famous Acorn Gas Ranges, at these sweeping discounts. Although thousands of dollars worth of furniture has already been sold to delighted purchasers, this sale has scarcely begun and there are wonderful opportunities awaiting you here NOW.



PINE AVENUE  
AT BROADWAY

**Buf fums'**  
Formerly The Mercantile Co

LONG BEACH  
CALIFORNIA

WE DELIVER TO ALL POINTS IN SOUTHERN CALIFORNIA