

**PHYSICIANS & SURGEONS MD
(Cont'd)**

Bower Paul L
3612 W 242dFR 5-6812

Briggs John D
2369 Torrance Bl FA 8-0304

Brown Thos R
4010 Sepulveda Bl

Carter Robt C
4010 Sepulveda Bl FR 8-4231

Casey Wm C
2414 Torrance Bl FA 8-8871

Cook Eug L 1104 Sartori Av FA 8-2902

Cope Jerome A
2401 Torrance Bl FA 8-8330

Davies Wm A
2410 Torrance Bl Suite D FA 8-3273

Darin Harold C
1218 Crenshaw Bl FA 8-1181

Easley Clifford E
Orthopedics-General Surgery
2055 Torrance Bl FA 8-1320

Eastham Gerald M
2275 Carson Av FA 8-6827

Eckerle Wm J
2406 Torrance Bl FA 8-1444

Ellenhorn Matthew J
24 Hour Service
2093 Torrance Bl FA 8-3420

Fisher Jack A
2406 Torrance Bl FA 8-1444

Gant Robt J
General Practice
1331 Crenshaw Bl FA 8-0020

Gethner Paul J
1753 Cabrillo Av FA 8-1008

Grace Gordon W
2401 Torrance Bl FA 8-8330

Gregory Nicholas S
1104 Sartori Av FA 8-2902

Grubbs Wm E
2211 Torrance Bl FA 8-5301

Halloran Phillip M
2115 Torrance Bl FA 8-5252

Harris Robt H
1321 Cravens Av FA 8-0322

Harvie Evan T
17411 Crenshaw Bl DA 9-1189

Herman Fredk F
2422a Torrance Bl FA 8-8253

Jacobson Gerson A
1753 Cabrillo Av

Jay Jos P
4060 W 226th FR 5-1478

Jayson Clement C
2055 Torrance Bl FA 8-1320

Johnson Wm M
1335 Post Av FA 8-4364

Knutson Edw W
2406 Torrance Bl FA 8-7011

Kuchar BE
2369 Torrance Bl FA 8-0340

Lebow Robt C
1104 Sartori Av FA 8-2902

Lees Jas K
2275 Carson Av FA 0-0161

Leonelli Leo P
1404 Sartori Av FA 8-2902

Lescoe Richd J
1321 Cravens Av FA 0-0614

Mar Wing Y
2410 Torrance Bl Suite A FA 8-5785

**PHYSICIANS & SURGEONS MD
(Cont'd)**

Mason P W
22422 Palos Verdes Bl FR 5-8000

McCormick Robt P
2422a Torrance Bl FA 8-8855

McNiel Ralph W
2376 Torrance Bl FA 8-2468

Medical Clinic of Torrance
2055 Torrance Bl FA 8-1320

Mellins Sherwin
General Practice-Surgery
2055 Torrance Bl FA 8-1320

Miller Chas R
1335 Post Av FA 8-5060

Moshos DC
1617 Cravens Av FA 8-2722

Neacy Clement F
2406 Torrance Bl FA 8-3940

Nursall John F
2163 Torrance Bl FA 8-6022

Peeke Geo O
Obstetrics-Gynecology
2055 Torrance Bl FA 8-1320

Reed Ralph R
1617 Cravens Av FA 8-3482

Reed Raymond L
1321 Cravens Av FA 8-0940

Romeo Matthew P
2422b Torrance Bl FA 8-8680

Schleissner Leopold A
18402 Hawthorne Av FR 6-3241

Shery Kurt T
1104 Sartori Av FA 8-2902

Stein Harold L
2401 Torrance Bl FA 8-8330

Stetson Rodney A
2406 Torrance Bl FA 8-0623

Sullivan Richd A
2207 Torrance Bl FA 8-5073

Tabellario Carl A
1104 Sartori Av FA 8-2902

Tippin John W
1333 Post Av FA 8-6970

Tompkins Donald R
1753 Cabrillo Av FA 8-6355

Torrance Emergency Medical
2093 Torrance Bl FA 8-3420

Van Adelsberg Joost H
4010 Sepulveda Bl FA 8-2282

Walter Jos
2401 Torrance Bl FA 8-8330

Warshaw Arth H
1616 Cabrillo Av FA 8-4354

Weiss Robt C
1104 Sartori Av FA 8-2902

Weiss Woodrow E
Industrial Medicine-General Surgery
2055 Torrance Bl FA 8-1320

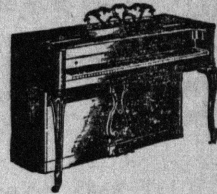
Winn Paul A
2115 Torrance Bl FA 8-5252

Wood Howard A
2207 Torrance Bl FA 8-5073

Wolf Walter H
5105 Paseo de Pablo FR 5-8431

Woolf Wilford W
1335 Post Av FA 8-3910

PIANOS-DEALERS
FICHT PIANO CO
615 S Gaffey Sn Pdro. TE 2-6001
(See adv this classification)

**Baldwin
PIANOS - ORGANS****NEW and USED
RENT to BUY
EASY TERMS**Many Styles - Finishes
We **BUY** and **TRADE**
Tune - Repair - Restyle**FICHT
PIANO CO.****TE. 2-6001****615 S. GAFFEY ST., SAN PEDRO****PIANOS-TUNING & REPAIRING****LUPIEN FRANCIS G**5343 Bindowald Rd. FR 5-8322
Peters Arland D
1020 Amopola Av FA 0-0232**PICTURE FRAMES-DEALERS**Nair's Picture Shop
1214 El Prado FA 8-7728**PIPE BENDING &
FABRICATING****RAECO ENGINEERING CO**

1801 Torrance Bl. FA 8-4077

PLANTERS-INTERIOR**GREEN THUMB GARDENS**20617 Hawthorne Bl. FR 9-7214
(See adv at Nurseries-Retalso Front Cover)
TROPICAL BOWL NURSERY
2457 W Lomita Bl Lmta. DA 6-7130
(See adv at Nurseries-Retail)**PLASTERERS**Duncan Harold R
2418 W 233d DA 6-9423
McGinnis Billy W
706 Pine Dr FA 8-2548**PLASTIC FABRICATING &
PROCESSING-SEE ALSO
PLASTIC FORMING**Alper Plastic & Mfg Co
1734 W Carson FA 0-0452