

**MILK & MILK PRODUCTS**  
(Cont'd)

- Mayfair Creamery  
20301 Western Av ..... FA 8-2526
- Morgan's Dairy Farm  
20361 Earl ..... FR 2-0913
- Palos Verdes View Dairy  
22845 Hawthorne Av ..... FR 5-1602
- QUINN'S DAIRY**  
4016 Del Amo Bl ..... FR 2-6803  
(See adv this classification  
also Back Cover)
- Sunny Crest Dairy  
3923 Spencer ..... FR 9-2516
- Verburg Dairy  
2093 W 174th ..... DA 9-1191
- Verburg Dairy Inc  
18158 Crenshaw Bl ..... DA 4-3331
- VERMONT DAIRY**  
22416 S Vermont  
(See adv this classification)

**MILL SUPPLIES**

- Mobar Industrial Supply Co  
1116 Border Av ..... FA 8-4761

**MIMEOGRAPHING SERVICE**

- FRAN'S LETTER SHOP  
1960 Torrance Bl ..... FA 8-1311

**MIRRORS**

- CHEATHAM GLASS & MIRROR CO  
900 Pier Av Herm Bch ..... FR 4-6900  
(See adv at Glass-Auto, Plate,  
Window, Etc)

**MORTGAGES**

- STEPHENS AL REALTY CO  
15001 S Vermont Av Grd ..... DA 9-1030  
(See adv at Real Estate)

**MOTELS**

- Driftwood Motel  
3960 Pacific Coast Hwy ..... FR 5-0511
- El Rancho Motel  
3215 Pacific Coast Hwy ..... DA 5-0550
- PALOS VERDES MOTEL**  
3902 Pacific Coast Hwy ..... FR 5-9004  
(See adv this classification)
- Sunshine Motel  
24065 Hawthorne Av ..... FR 5-7713
- TERRY'S MOTEL**  
415 W Carson ..... FA 8-0315

**MOTOR SCOOTERS**

- TORRANCE BOAT MART  
1545 W Carson ..... FA 8-4747

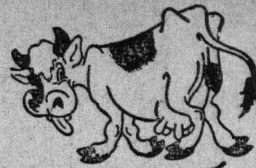
**MOTORCYCLES**

- Shumaker Motorcycle Sales  
2311 Arlington Av ..... FA 8-7640

**MOVING & STORAGE SERVICE**

- BEKINS VAN & STORAGE CO  
22850 Hawthorne Av ..... FR 5-0588
- Mayflower Transit Co  
21809 Western Av ..... FA 8-7021
- Torrance Van & Storage Co  
21809 Western Av ..... FA 8-7021

The Classified Section of Your  
Criss Cross City Directory is  
the logical place to look when  
you need a product or service.



*Inglewood Farms*  
**MILK**



*"Bottled on the Farm"*

Phone  
**FRontier**  
**4-8971**

**HOME DELIVERY**  
OR  
MILK AVAILABLE AT  
**CASH & CARRY**  
PRICES  
AT OUR DAIRY RANCH

**3400 DEL AMO BLVD.**

**TORRANCE**



**PALOS VERDES**

**25 UNITS**  
**HEATED SWIMMING POOL**  
**TV IN EVERY ROOM**  
**BEAUTYREST MATTRESSES**

**\$6.00 A DAY**  
RATES - SUMMER & WINTER

**COFFEE SHOP**  
**COCKTAIL LOUNGE**

**IF YOU NEED ROOM FOR**  
**YOUR UNEXPECTED GUESTS**  
**CALL**

**FRontier 5-9004**

*"10 Miles West of Long Beach"*  
**3902 Pacific Coast Hwy, Torrance**

**Vermont Dairy**

- ★ **DRIVE-IN DAIRY** ★  
Grade A Milk, Past. Hom.- Vit. D  
Skim Milk ● Half and Half  
Buttermilk ● Ice Cream  
Other Grade A Dairy Products

**FRESH MILK DIRECT FROM  
PRODUCER TO CONSUMER**

**VERMONT DAIRY**

22416 S VERMONT  
223rd & VERMONT  
Open Every Day from  
7:30 A. M. - 8:30 P. M.

**ADVERTISEMENTS—**

make this Directory possible.  
When patronizing merchants  
listed herein tell them you saw  
their ad in the **CRISS CROSS**  
**DIRECTORY.**