



TORRANCE, CALIFORNIA

FIFTH IN AREA—Covering 18.88 square miles, fifth largest city in area in Los Angeles County, with ample elbow room for planned expansion in every direction.

POPULATION—(estimated) 20,000. Trading area approximately 60,000.

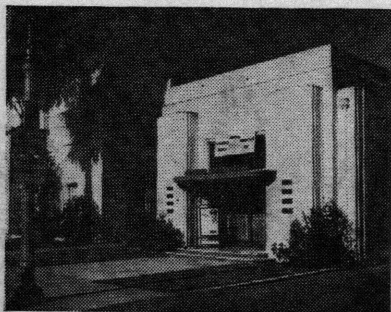
CLIMATE—Torrance is cooled by the gentle breeze of the Pacific, only four miles to the west of the center of the city.

ASSESSED VALUATION—1948-49—\$43,000,000.00.

TRANSPORTATION—Excellent and frequent municipal buses furnish service to Los Angeles and neighboring communities, supplemented by local service for the convenience of shoppers. Greyhound Motor Coaches to the South Bay communities and through service to central and northern California and south to Long Beach and San Diego.

AIRPORTS—Torrance Municipal Airport and Bay Cities Airport, with complete facilities for private aviation enthusiasts.

- **FREIGHT**—Southern Pacific, Pacific Electric, and Santa Fe Railroads.
- **COMMERCE**—The industrial hub of Los Angeles County.
- **HIGHWAYS**—Western Ave. and Crenshaw Blvd. lead direct to Torrance.
- **SCHOOLS**—Torrance Unified School District. Excellent high and grade school facilities, including Parochial grade school, and El Camino Junior College.
- **CHURCHES**—21.
- **INDUSTRIES**—100—ANNUAL PAYROLL \$36,400,000.00.
- **CIVIC CLUBS**—Woman's Club, Rotary, Kiwanis, Lions, 20-30 Club, Optimist, Toastmasters and 50 other organizations.
- **RECREATIONS**—Completely equipped playground and picnic facilities, baseball stadium, lighted, numerous parks throughout the city.



1345
El Prado

Phone
125

TORRANCE CHAMBER OF COMMERCE

BLAINE WALKER, Executive Secretary