

UNITED CRUSADE 1967 REPORT

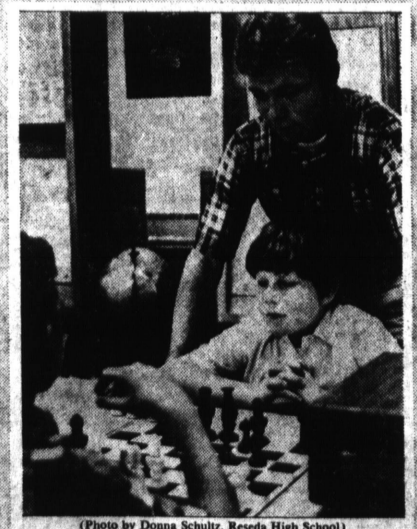
You helped—Bring home to this serviceman in Vietnam. An American Red Cross worker is with him wherever he goes.



You helped—Through a United Way adoption service to make this happy group a family.



You helped—Send a Visiting Nurse to someone needing care at home.



You helped—Provide boys and girls with constructive after school activity.

LOCAL AGENCIES

Alhambra Welfare Association	\$1,020	Family Counseling Service of Long Beach	\$3,942	Pacific Lodge Boys' Home	\$2,948	Department Relief Account	\$2,000
All Nations Foundation	\$154,500	Family Counseling Service of West San Gabriel Valley (2)	\$42,262	Paramount Junior Athletic Association	3,100	General Work	\$1,400
Antelope Valley Association for Retarded Children	7,300	Family Service Agency of Burbank	23,264	Parent Teacher Associations (Child Health & Welfare Programs)		Men's Service Club-Post Mission	30,718
Arcadia Child Health Council	6,508	Family Service Association of Antelope Valley	24,508	Centinela Valley Council—33rd District	2,184	Welfare Information Service Relief Account	227
Armed Services YMCA of Long Beach	30,497	Family Service Association of Pomona	\$19,000	El Segundo Health & Welfare	500	Welfare Planning Council, Los Angeles Region (1)	304,058
Assistance League Day Nursery	26,800	Family Service Association of Whittier	28,826	Inglewood Council—33rd District	410	Westminster Community Center	27,762
Assistance League Family Service Agency	\$3,800	Family Service of El Monte	4,920	Lawndale Council—33rd District	1,400	Westminster Neighborhood Association	29,758
Assistance League of Antelope Valley Day Nursery	1,760	Family Service of Los Angeles (1)	\$12,739	Los Angeles—10th District	\$93,370	Woodcraft Rangers (1)	94,062
Aviation-Carver Community Center	65,211	Family Service of Monrovia	9,205	Dental Program	62,112	Young Men's Christian Associations	
Azusa Council of Social Agencies	2,200	Society of Los Angeles Five-Areas-Boys' & Girls' Aid	77,534	Thirty-First District—Dental Program	23,306	Antelope Valley	14,772
Bassett Community Welfare Council	1,700	Foothill Family Service Association (1)	\$103,025	Pasadena Child Guidance Clinic	66,640	Beverly Hills	73,932
Beacon Light Mission	17,405	Girl Scouts of America		Pasadena Council on Alcoholism	8,050	Burbank	41,997
Big Sister League	\$30,460	Glendale Area Council	30,627	Plaza Community Center	37,163	Centinela Valley Area	71,638
Boy Scouts of America		Greater Long Beach Council	80,931	Pomona Valley Hearing Society	2,730	Crescenta-Canada	18,269
Crescent Bay Area Council	62,803	Joshua Tree Council	14,873	Protestant Community Services (1)	128,320	Glendale	40,573
Long Beach Area Council	92,030	Marino Council	16,153	Psychiatric Clinic for Children of Long Beach	28,158	Long Beach	108,500
Los Angeles Area Council	306,407	Pasadena Area Council	39,560	Queen of Angels Clinic	65,563	Pasadena	\$66,478
Old Baldy Council	27,910	San Fernando Valley Council	86,153	Rancho San Antonio	37,668	Pomona	44,418
San Fernando Valley Council	\$154,642	Santa Anita Council	49,849	Reiss-Davis Child Study Center	25,000	San Gabriel Valley	16,150
San Gabriel Valley Council	\$128,214	Spanish Trails Council	77,858	Released Time for Religious Education	241	Santa Anita District	28,000
Southern Sierra Council	1,068	South Bay Council	14,244	Rethaven Psychiatric Hospital	41,038	West San Gabriel Valley	23,040
Verdugo Hills Council	71,913	Girls' Club of Pasadena	14,825	Rio Hondo Boys Club	15,372	Whittier	75,586
Boys' Club of Hollywood	38,900	Glendale Family Service Association	27,030	Rosemary Cottage	32,290	Young Women's Christian Associations	
Boys' Club of Pasadena	66,175	Glendale Guidance Clinic	2,500	St. Ann's Maternity Hospital	107,159	Glendale	\$4,928
Boys' Club of San Pedro	39,193	Glendale Welfare Planning Council (1)	7,760	St. Elizabeth Day Nursery	22,000	Glendora	5,883
Boys' Clubs of Long Beach	75,151	Glendora Welfare Association	2,103	St. Vincent de Paul Society Relief Account	14,642	Greater Bonita	3,700
Boys Republic	13,792	Hamburger Home	\$5,928	St. Vincent de Paul Society—Relief Account	6,750	Harbor Area	84,347
California Pediatric Center	55,017	Hands That Help	\$1,175	St. Vincent de Paul Society—Catholic Maritime Clubs Relief Account	22,440	Long Beach	65,222
Camp Fire Girls		Hathaway Home for Children	59,494	Salt Lake City—Relief Account	625	Los Angeles (1)	\$22,999
Burbank Council	21,096	HEAR Foundation	22,884	Salt Lake City—Administration	18,488	Pasadena	\$81,716
Compton Council (1)	24,955	Holy Family Adoption Service	65,698	Salt Lake City—Service Extension	85,441	San Gabriel Valley	14,350
Glendale-Crescenta Valley Council	16,866	Relief Account	120	Southwest Community Health Clinic Association—Child Guidance Program	17,264	Torrance	13,423
Kern County Council	2,000	Homer Toberman Settlement House	41,342	Special Service for Groups	83,795	Youth Foundation	
Long Beach Council	32,491	Heastomy Association of Los Angeles	5,237	Travelers Aid Society of Long Beach	34,384	Ballflower	3,050
Los Angeles Area Council (1)	133,022	Intercommunity Child Guidance Center	9,374	Travelers Aid Society of Los Angeles	\$190,000	Bellevue	1,000
Mt. San Antonio Council	\$40,762	International Institute of Los Angeles	123,760	U.S.O.—Los Angeles Area	164,747	Bellevue	1,000
Rio Hondo Area Council	35,912	Relief Account	3,700	Valley Cities Jewish Community Center	63,573	Bellevue	1,000
San Gabriel Valley Council	36,527	Jewish Big Brothers Association of Los Angeles County (1)	\$115,898	Variety International Boys' Club	35,500	Bellevue	1,000
Santa Fe Trail Council	\$19,446	Camp Max Straus	54,817	Visiting Nurse Associations	8,354	Bellevue	1,000
Catholic Big Brothers (1)	\$42,019	Jewish Committee for Personal Service	105,074	East San Gabriel Valley	206,454	Bellevue	1,000
Catholic Welfare Bureau (1)	706,013	Relief Account	1,800	Pasadena and San Gabriel Valley	20,126	Bellevue	1,000
Relief Account	111,404	Jewish Family Service of Long Beach	15,433	Pomona	7,047	Bellevue	1,000
Catholic Youth Organization (1)	398,284	Jewish Family Service of Los Angeles (1)	188,542	Whittier	6,322	Bellevue	1,000
Cedars of Lebanon Hospital-Clinic	336,749	Relief Account	30,150	Visiting Nurse Service of Long Beach	23,859	Bellevue	1,000
Children's Bureau of Los Angeles (1)	213,409	Jewish Federation-Council of Greater Los Angeles	124,657	Service Del Mar Child-Care	225,159	Bellevue	1,000
Relief Account	114	Jewish Home for the Aged of Los Angeles—Social Service Department	28,925	Relief Account	9,400	Bellevue	1,000
Children's Home Society of California Los Angeles District (1)	86,546	Jewish Rehabilitation Service	25,455	Volunteer Bureau, Los Angeles Region	31,939	Bellevue	1,000
Relief Account	12,000	Julia Ann Singer Preschool	32,000	Volunteers of America, Long Beach Post	14,456	Bellevue	1,000
Children's Hospital of Los Angeles	935,424	Psychiatric Center	32,000	Volunteers of America, Los Angeles		Bellevue	1,000
Children's Speech and Hearing Center	19,909	Juniper Serra Boys' Club	29,110	Volunteers of America, Long Beach Post	14,456	Bellevue	1,000
Cleveland House of Neighborly Service	34,700	La Canada Youth Council	5,366	Volunteers of America, Los Angeles		Bellevue	1,000
Community Planning Council, Pasadena (1)	26,664	La Casa de San Gabriel	4,560	Volunteers of America, Los Angeles		Bellevue	1,000
Community Visiting Nurse Association, Glendale	30,961	La Puente Valley Welfare	5,953	Volunteers of America, Los Angeles		Bellevue	1,000
Community Volunteer Office, Long Beach (1)	13,812	Lark Ellen Home for Boys	30,795	Volunteers of America, Los Angeles		Bellevue	1,000
Community Welfare Council, Long Beach (1)	26,813	Legal Aid Foundation of Los Angeles	98,124	Volunteers of America, Los Angeles		Bellevue	1,000
Community Youth Employment—Alhambra	270	Legal Aid Society of Pasadena	3,870	Volunteers of America, Los Angeles		Bellevue	1,000
Convent of the Good Shepherd of Los Angeles	24,241	Long Beach Children's Clinic	28,478	Volunteers of America, Los Angeles		Bellevue	1,000
Council of Jewish Women of Los Angeles	95,719	Long Beach Day Nursery	75,612	Volunteers of America, Los Angeles		Bellevue	1,000
Covina Area Welfare Committee	2,000	Long Beach Jewish Community Center	23,278	Volunteers of America, Los Angeles		Bellevue	1,000
David and Margaret Home for Children	9,666	Los Angeles Child Guidance Center	86,113	Volunteers of America, Los Angeles		Bellevue	1,000
Duarte Community Service Council	2,197	Los Angeles Psychiatric Service	113,149	Volunteers of America, Los Angeles		Bellevue	1,000
Duarte Youth Area	3,200	Los Angeles Urban League	89,013	Volunteers of America, Los Angeles		Bellevue	1,000
Eastside Boys' Club	44,700	Maryvale	70,818	Volunteers of America, Los Angeles		Bellevue	1,000
Edgewood Family Counseling Agency	27,596	McKinley Home for Boys	79,408	Volunteers of America, Los Angeles		Bellevue	1,000
El Calvario Community Center	10,800	Midnight Mission	12,000	Volunteers of America, Los Angeles		Bellevue	1,000
El Monte Community Welfare Association	9,720	Monrovia Children's Dental Clinic	\$2,800	Volunteers of America, Los Angeles		Bellevue	1,000
Episcopal City Mission Society of Los Angeles	10,771	Monrovia School Guidance Center	3,000	Volunteers of America, Los Angeles		Bellevue	1,000
		Monterey Park Emergency Aid Association	468	Volunteers of America, Los Angeles		Bellevue	1,000
		Neighborhood Youth Association (1)	95,816	Volunteers of America, Los Angeles		Bellevue	1,000
		Ontario-Pomona Association for Retarded Children	4,226	Volunteers of America, Los Angeles		Bellevue	1,000
		Orthopaedic Hospital	386,436	Volunteers of America, Los Angeles		Bellevue	1,000

AMERICAN RED CROSS CHAPTERS

Antelope Valley	\$ 26,007
Arcadia	35,759
Burbank	65,016
East San Gabriel Valley	82,664
Glendale-Crescenta Valley	111,921
Long Beach	356,661
Los Angeles	3,273,109
Pasadena	366,414
Pomona	86,843
Rio Hondo	110,528
West San Gabriel Valley	129,104
TOTAL	\$4,644,026

TOTAL \$16,956,097

Total raised by UNITED CRUSADE, partnership between United Way and 11 Los Angeles County Chapters of The American Red Cross... \$21,600,123

The United Crusade Committee, representative of both United Way and The American Red Cross determined that of this amount

United Way would receive... 16,956,097

and The American Red Cross would receive... 4,644,026

1967/68 REPORT FROM YOUR UNITED CRUSADE

... not a request for contributions. Congratulations to the thousands of volunteers who raised a record amount in the third United Crusade. We also salute the thousands who gave so generously to help people all over Los Angeles County.

This is a complete accounting of the share of funds raised through the 1966 United Crusade—a partnership appeal for United Way services and those of 11 Los Angeles County Chapters of The American Red Cross.

Hundreds of volunteers representing Areas and communities gave hours of free time in deciding where your money should be spent. They were concerned with providing a maximum amount of health and welfare services for you and your neighbors.