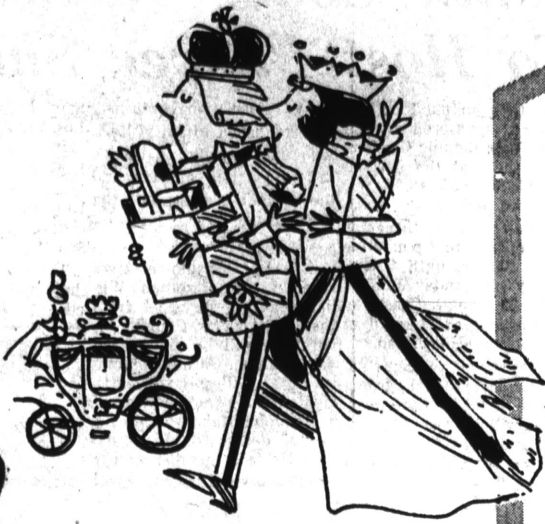


Superior
Quality at
Sensational
Savings!



THRU JUNE 14, 1967

RICH, FLAVORFUL
DEL MONTE
POTATO CATSUP
2 1/2-oz. bottles **29¢**

TASTY, NUTRITIOUS
NUCOA
MARGARINE
1-lb. ctn. **23¢**

Grade 'AA' Butter 1-lb. carton **79¢**
Delicious combination for salads, desserts.
Fruit Mix 4 large 2 1/2 cans **\$1**
Del Monte Beans tall 303 can **23¢**
Stringless, tender-crisp Blue Lakes.
Instant Mashed Potatoes 13-oz. pkg. **39¢**

SUNSWEEP
PRUNE
JUICE
quart bottle **39¢**

BATHROOM—WHITE OR COLORS
ZEE
TISSUE
ROLLS (Three 4-roll packs) **\$1**

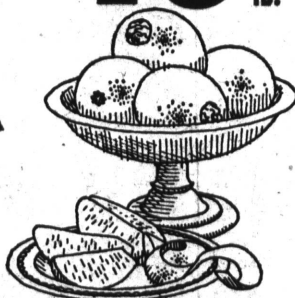
Tender Spring peas—full of natural garden sweetness.
Del Monte Peas tall 303 can **19¢**
Donald Duck. Juicy sections for salads, desserts.
Grapefruit 4 tall 303 cans **\$1**
Chris & Pitt's. Whole. Your family and guests will love 'em.
Sweet Pickles 22-oz. jar **59¢**
Mahatma. Fine quality—fluffy, tender every time.
Long Grain Rice 2-lb. pkg. **45¢**
Giant Detergent (Includes 10c off label).
Ivory Liquid 22-oz. **49¢**

SAVA-LEE
CAKES &
ICE CAKES
69¢

Produce

GOLDEN RIPE
CHIQUITA
BANANAS
10¢ lb.

SWEET, JUICY—NEW CROP
VALENCIA
ORANGES
10¢ lb.



U.S. NO. 1—SWEET, MILD
BROWN
ONIONS
10¢ lb.



THIN SKINNED
JUICY LEMONS
10¢ lb.
TENDER, CRISP
SWEET CARROTS
1-lb. cello bag **10¢ ea.**

Day Specials

V.O. **\$6.60**
Gin **\$5.99**
otch **\$5.99**
Club **\$6.55**
86 Proof **\$4.99**
k **\$7.25**
Vodka 80 Proof **\$4.59**
7 Crown **\$4.99**

HOMADE
BARREL STYLE
SAUERKRAUT
22-oz. jar **33¢**

Magic Chef Bakery

BUTTERCRUST
BREAD

1 1/2-lb. loaf **35¢**

Rich brown sugar 'n honey cake, with nut topping.
Old Fashioned Tea Cakes Reg. 69¢ **59¢**
Makes any coffee klatch an instant success!
Cherry Coffee Cake Reg. 69¢ **59¢**

Old-Fashioned Delicatessen

COOKED
PASTRAMI

By The Piece **98¢ lb.** Reg. \$1.98 lb.

Potato, Macaroni or Cole Slaw. One pound.
Homemade Salads Reg. 49¢ lb. **35¢ lb.**
Semi-soft, with rich, mild flavor.
Muenster Cheese Reg. \$1.10 lb. **89¢ lb.**



U.S.D.A. GRADE 'A' FRESH CHICKEN

WHOLE
FRYERS
2 to 2 1/2 lbs. **29¢ lb.**

You can feed a hungry crowd when you choose these extra-large, meaty birds.
KING-SIZE FRYERS **33¢ lb.**
Fresh chickens, all cut up and ready to pop into the pan.
CUT-UP PAN READY FRYERS **35¢ lb.**
U.S.D.A. 'Choice' Beef—Center cut, trimmed by our meat cutting experts.
SEVEN BONE STEAK **49¢ lb.**

U.S.D.A. 'CHOICE' BEEF

CHUCK
STEAK
39¢ lb.



U.S.D.A. 'CHOICE' BEEF

STANDING
RIB ROAST
large end **79¢ lb.**

U.S.D.A. 'Choice' Beef. Boned and trimmed by meat experts!
BONELESS CHUCK STEAK **79¢ lb.**
U.S.D.A. 'Choice' Beef—Try this tender, juicy steak on your beef eaters!
RIB STEAK **89¢ lb.**
Lean, meaty cubes of flavor-aged beef for flavorful stews and casseroles.
BONELESS BEEF STEW **79¢ lb.**
U.S.D.A. 'Choice' Beef—Whole or point cut. Delicious hot—great reheated.
BONELESS BEEF BRISKET **89¢ lb.**
Skinless, juicy links, with Farmer John's special blend of seasonings.
FARMER JOHN SAUSAGE 3 8-oz. pkgs. **\$1**

WHOLE LEGS OR BREASTS

FRYER
PARTS
59¢ lb.



U.S.D.A. 'CHOICE' BEEF

SHORT
RIBS
29¢ lb.

Magic Chef takes only the leanest chuck for grinding—extra tasty!
FRESH GROUND CHUCK **59¢ lb.**
Made from flavor-aged round steak—a perfect choice for outdoor grilling.
FRESH GROUND ROUND **69¢ lb.**
Honey Suckle. No fuss, no waste! (Sliced Turkey and Gravy—2-lb. pkg., \$1.98)
TURKEY ROAST 2 1/2-lb. pkg. **\$3.59**

Gourmet Sea Foods

Pan-ready fillets. A favorite California fish!
Fresh Red Snapper 69¢ lb.
Delicate, flaky fish, in pan-ready fillets.
Fresh Ocean Perch 69¢ lb.

Certi-Fresh freezes only the finest—these!
Family Fish Cakes 2-lb. pkg. **98¢**
Certi-Fresh frozen fillets in rich butter sauce.
Halibut in Butter Sauce 9-oz. pkg. **73¢**

DEL AMO SHOPPING CENTER CORNER OF HAWTHORNE & SEPULVEDA

MAGIC CHEF

we welcome FOOD STAMP SHOPPERS