



# GOLDEN WEST

## WHOLESALE MEATS

**OPEN Daily**

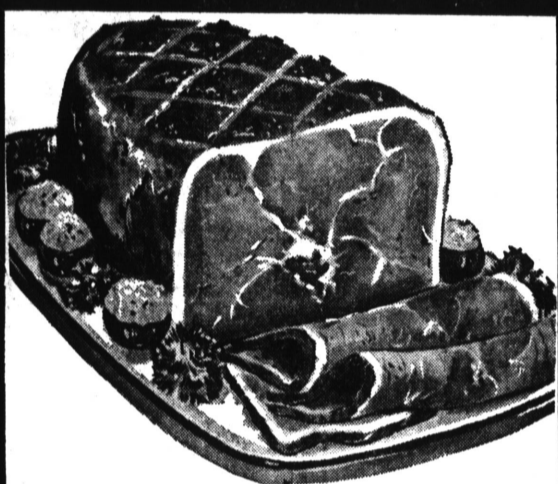
MON. thru SAT.  
9 a.m. to 6 p.m.

**12211 HAWTHORNE BLVD. — HAWTHORNE**  
**22411 HAWTHORNE AVE. — TORRANCE**

OVER 30 MILLION LBS. OF MEAT SOLD IN 1966  
BECAUSE "MEAT IS OUR ONLY BUSINESS"

**SPECIAL PRICES GOOD**  
Thursday  
Friday & Saturday

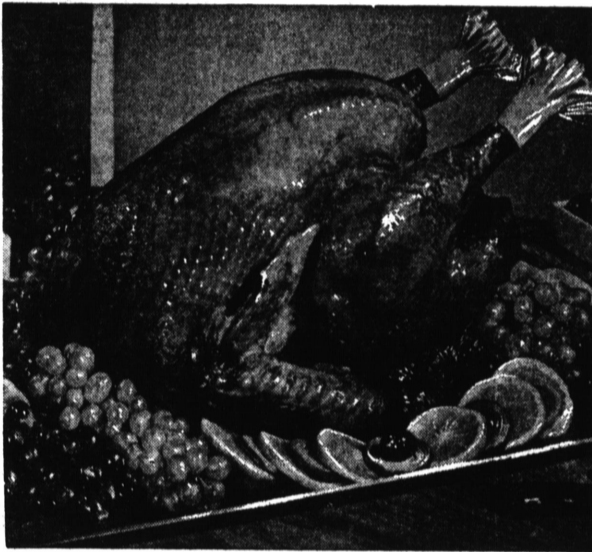
**FOR YOUR DECORATION DAY HOLIDAY FEASTING!**



**"DUBUQUE"  
CANNED  
HAMS**

5-LB. CAN

**\$339**  
HOLIDAY TREAT!

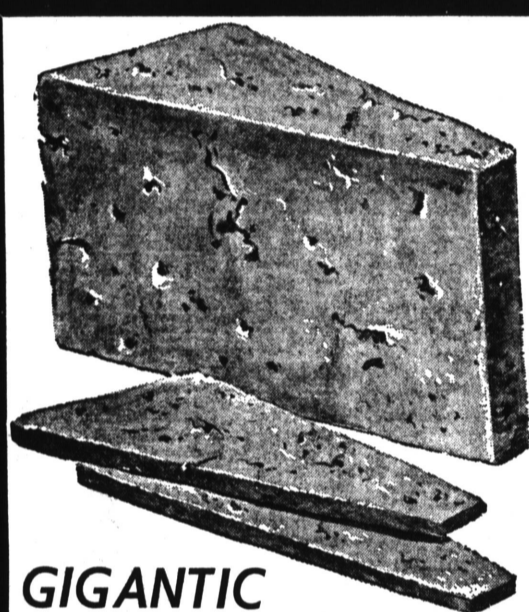


USDA GRADE "A" California Grown

**TOM TURKEYS**

22 to 24 Lb. Avg. ★ WHOLE or HALF

**29**¢/lb



**GIGANTIC  
CHEESE SALE**

- ✓ Sliced American
- ✓ Imported 'Grade A' Swiss
- ✓ Imported 'Finnish' Muenster
- ✓ Mild Cheddar Longhorn
- ✓ Monterrey Cream Jack

**59**¢/lb

GOLDEN WEST'S  
"Famous for Flavor"

**ALL MEAT  
WIENERS**

**3** lbs. **\$100**

10 POPULAR  
VARIETIES  
**LUNCHEON  
MEATS**

(MIX OR MATCH)

**2** lbs. **\$100**

KOSHER STYLE.

**SLICED  
PASTRAMI**

**89**¢/lb

CENTER CUTS.  
**SLICED  
BOILED  
HAM**

**98**¢/lb

The Home of The Low Price King • The Home of The Low Price King

The Home of The Low Price King • The Home of The Low Price King • The Home of The Low Price King

The Home of The Low Price King • The Home of The Low Price King • The Home of The Low Price King